



28 Nelson Road Lindfield, NSW

4 

2 

2 

One of Lindfield's original cottages, extended for modern living

Discover 'Hatter's Cottage' set on 714.5 sqm (approx.) of private land on Lindfield's east side, a few minutes easy walk from village, cafes and rail. Behind the quaint facade and period details of the original front rooms, discover spacious entertaining areas flowing to wide verandas and secluded garden spaces. Rare features include a purpose-built library, sauna, large separate dining room and over-sized master bedroom.

- 714.5 sqm (approx.) of level north-west to rear land in non-conservation zone
- 700 m short walk to vibrant Lindfield village, cafes and rail station
- Federation-era charm with original features plus modern extension
- Rich timber floors, French doors, stained glass details
- Lovely front sitting room with a gas flame fireplace and French door access to the front veranda
- Massive family room with bar and wine fridges, opening to the back veranda and garden, perfect for entertaining

Price:

Contact Agent



Steven Kourdis

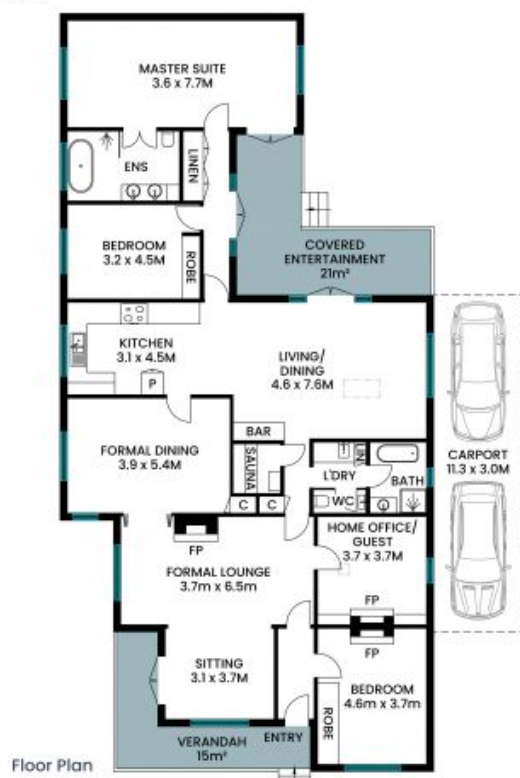
0402 555 675



Adette Cao

0433 412 196

28 Nelson Road
Lindfield



Internal area: 217m²
Covered external areas: 70m²
Total area: 287m²

The site plan and floor plan are not to scale; measurements are indicative and in metres. Bushes and trees are placed for illustration purposes. Plans should not be relied on. Interested parties should make and rely on their own enquiries. All other information provided has been collected from reliable sources but cannot be guaranteed for accuracy.