



Level 3/113/308 Wattle Street Ultimo, NSW



Parkside 2 Bedroom Apartment In the Hub of Ultimo

This luxury apartment in Acacia complex enjoys an elevated position with an enviable northeast/southwest aspect and sweeping views over Wentworth Park. Its thoughtful design includes a light-filled open plan living/dining/kitchen area, flowing onto a balcony with leafy green outlook. Meanwhile two spacious bedrooms are located at same bright ends, and the study makes for an ideal home office.

- Two-bedroom apartment of 90sqm on level 3 of security building
- Luxury pet-friendly complex in peaceful locale opposite Wentworth Park
- Bright open plan layout with timber look floors & northeast/southwest aspect
- Sliding doors opening onto 6sqm balcony with leafy park views
- Gourmet gas kitchen with stone benchtops and superior appliances
- Two bedrooms with mirrored built-ins, master with ensuite
- Two elegant fully tiled bathrooms with chic fittings, ensuite with bath
- Study, internal laundry, air conditioning

Price:

Under Contract - More Properties WANTED!



Noah (Miao) Xiong

0426 871 030



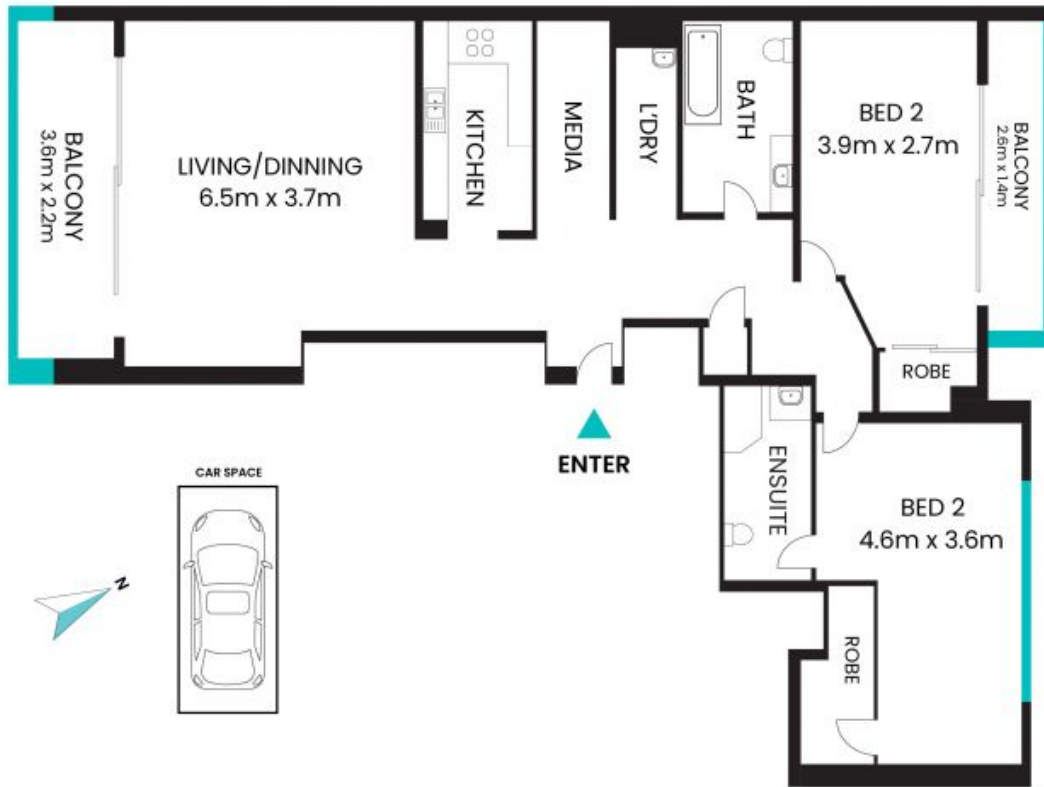
Sabrina (Xiaodan) Wang

0410 701 687

Wang

113/308 Wattle Street
Ultimo

STONE



The floor plan is not to scale, measurements are indicative and in metres. Dealer elements are not in position. Plans should not be relied on. Interested parties should mark and rely on their own enquiries. All other information provided has been collected from reliable sources but cannot be guaranteed for accuracy.