

23 Adina Place Wamberal, NSW 3 3 2

Gorgeous Family Home with Pool and Ocean Views

- Large swimming pool
- Timber kitchen overlooking the covered entertain area and pool
- 3 generous sized bedrooms with downstairs rumpus can be converted to make 4th bedroom
- Updated bathrooms
- Covered entertainment area
- Situated in a leafy pocket of Wamberal
- Conveniently located close to shops, restaurants, beach & schools

Price: Contact Agent
Council Rates: \$535.54 p/q
Water Rates: \$248.51 p/q

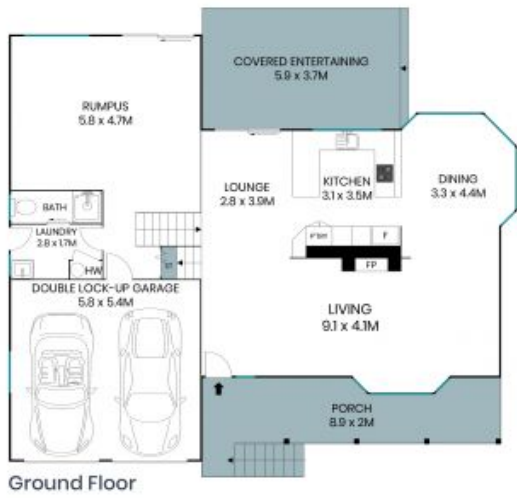


David Lyle
0408 440 010



David Lyle
0408 440 010

23 Adina Place
Wamberal



Ground Floor



First Floor



Site Plan

Internal Area: 222sqm
External Area: 49sqm
Land Area: 580sqm



The site plan and floor plan are not to scale; measurements are indicative and in metres. Bushes and trees are placed for illustration purposes. Plans should not be relied on. Interested parties should make and rely on their own enquiries. All other information provided has been collected from reliable sources but cannot be guaranteed for accuracy.