

9/16-18 Alfred Street Westmead, NSW



Vacant Possession

Enjoying a well-sought after position and generously sized interiors, this two-bedroom apartment presents a lifestyle of comfort and convenience. Positioned adjacent to Parramatta Park within the Westmead Hospital precinct, find yourself close to medical amenities and services as well as train stations, t-way, popular schools and shops.

- Large living area with split A/C, adjacent dining room
- Two spacious bedrooms with built-in robes, Master boasts an en suite
- Stunning floorboards featured throughout the living areas and bedrooms
- Sleek kitchen with stainless steel appliances & induction cook top
- Large covered entertaining area off living area
- Family sized bathroom with floor to ceiling tiling, shower
- Internal laundry, lock up garage
- 108sqm internal (including balcony) & 123sqm total (including balcony & lock up garage)

Price: \$580,000



Simar Gill

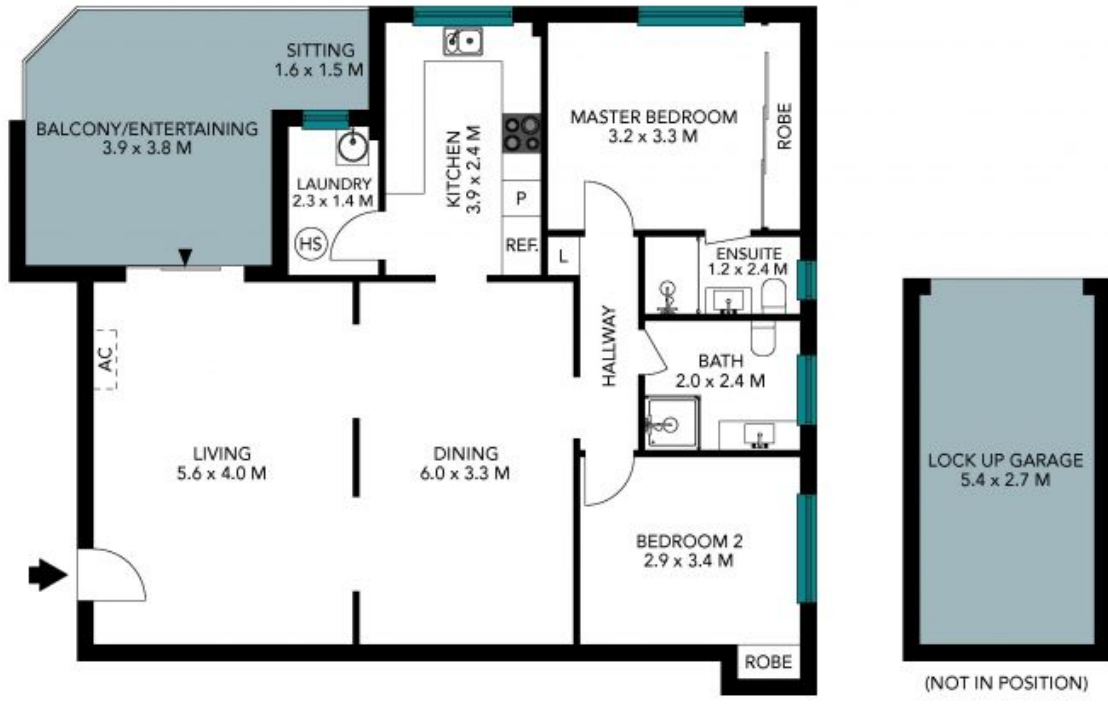
0410 312 242



Chris Kypreos

0432 354 445

9/16-18 Alfred Street
Westmead



The floor plan is not to scale, measurements are indicative and in metres. Detail elements are not in position. Plans should not be relied on. Interested parties should make and rely on their own enquiries. All other information provided has been collected from reliable sources but cannot be guaranteed for accuracy.

9/16-18 Alfred Street
Westmead



The floor plan is not to scale; measurements are indicative and in metres. All features included in this 3D plan are for inspiration purposes only. This is not an exact replica of the property or the position of exterior elements. Plans should not be relied on. Interested parties should make and rely on their own enquiries.