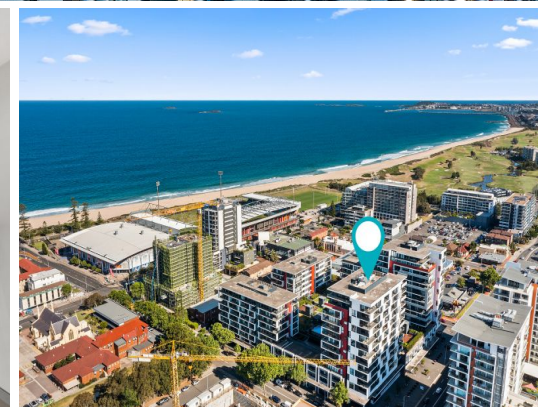


STONE



405/41 Crown Street Wollongong, NSW



SOLD BY STONE REAL ESTATE | NEIL WEBSTER & YENSON MUI

Price:

\$618,000

Stylish apartment in the vibrant heart of the city

An enticing combination of style and location, this light filled apartment captures city and escarpment views from its peaceful spot above the city. The intelligent free flowing design blends crisp neutral tones with sleek contemporary finishes, complemented by a sun-soaked entertainers' balcony. Exceptionally placed for ultimate carefree convenience, it's metres from shops, cafes and the beach.

- Open plan living/dining zone showcases seamless outdoor flow and plush carpet
- Well-appointed modern kitchen features quality Smeg appliances, stone benchtops
- Full width balcony with water and power, benefits from convenient dual access
- Spacious bedroom has built-in wardrobe, versatile study space for remote working
- Sparkling bathroom has walk-in rainfall shower, Euro laundry, air conditioning
- Secure intercom entry, basement parking with lift access, landscaped surrounds
- Moments from Wollongong Harbour & beaches, WIN Stadium and Wollongong Hospital



Neil Webster

0439 028 748

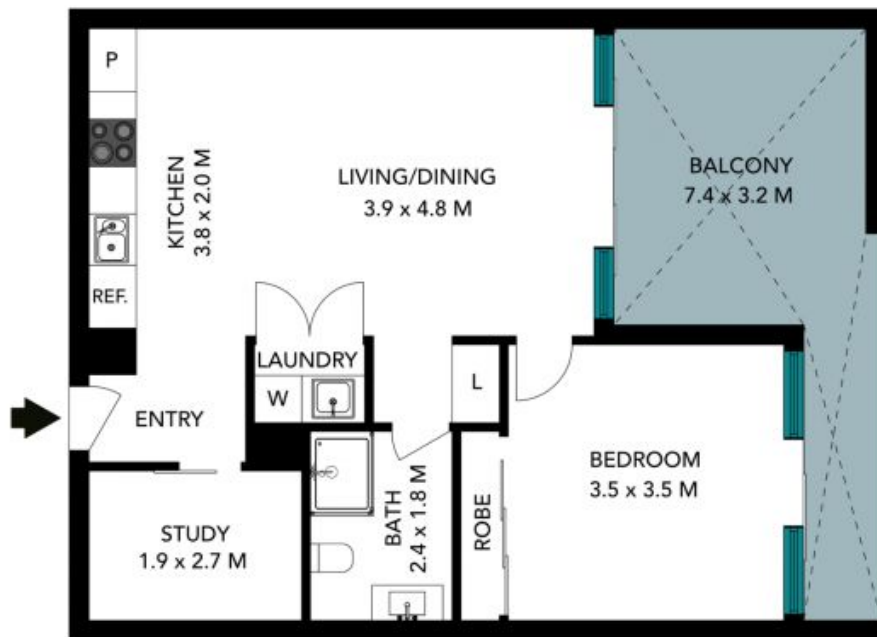


Yenson Mui

0421 882 541

www.stonerealestate.com.au

405/41 Crown Street
Wollongong



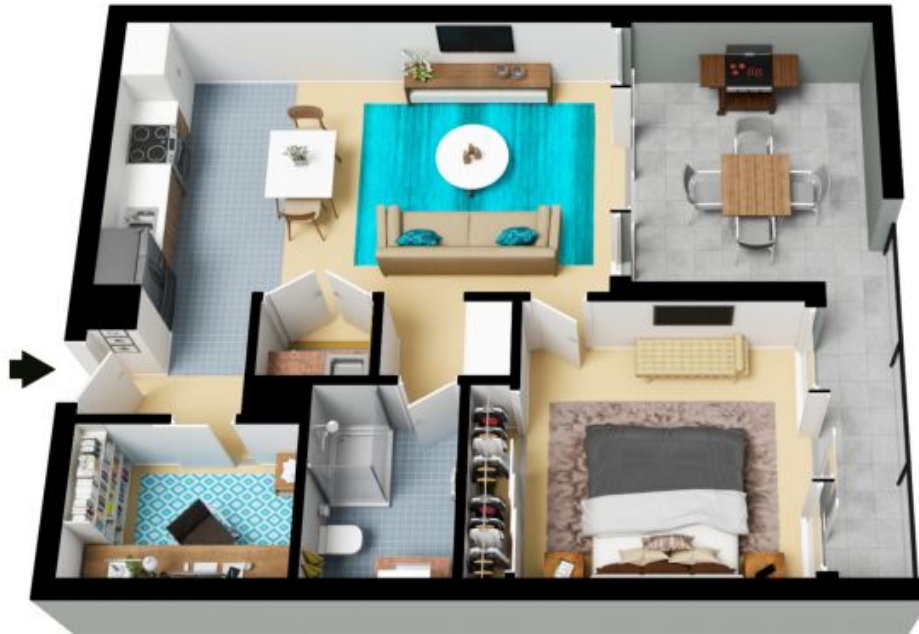
SECURE
CARPARK
5.4 x 2.6 M

(NOT IN POSITION)



The floor plan is not to scale, measurements are indicative and in metres, fixture elements are not in position. Plans should not be relied on, interested parties should make and rely on their own enquiries. All other information provided has been collected from reliable sources but cannot be guaranteed for accuracy.

405/41 Crown Street
Wollongong



The floor plan is not to scale; measurements are indicative and in metres. All features included in this 3D plan are for inspiration purposes only. This is not an exact replica of the property or the position of exterior elements. Plans should not be relied on. Interested parties should make and rely on their own enquiries.