



8/2a Killara Avenue Killara, NSW

3 

2 

2 

Breathtaking views with a penthouse lifestyle

Feel as if the whole world is yours from this breathtaking penthouse that delivers wow-factor across two spectacular levels, with views to the Blue Mountains horizon. Live and entertain with easy-care convenience and house-like proportions with 220sqm approx. on title and full brick and concrete slab quality.

Price:

Contact Agent



Ryan Woo

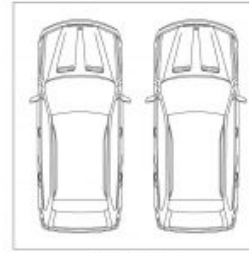
0410 884 680



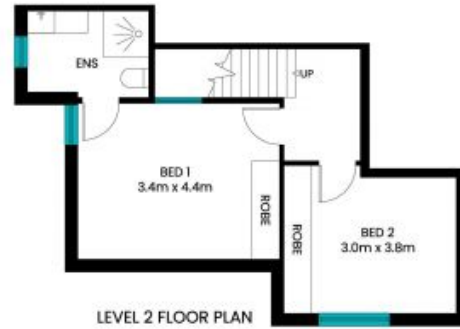
Steven Kourdis

0402 555 675

8/2A Killara Avenue
Killara



DOUBLE PARKING
28m²
(NOT ACTUAL LOCATION)



Internal & Terrace area: 192m²
Double Parking: 28m²
Total area: 220m²

The site plan and floor plan are not to scale; measurements are indicative and in meters. Bushes and trees are placed for illustration purposes. Plans should not be relied on. Interested parties should make and rely on their own enquiry. All other information provided has been collected from reliable sources but cannot be guaranteed for accuracy