



10/316 Pacific Highway Lane Cove, NSW 2  2  1 

**SOLD BY STONE GREENWICH**

Private Oasis - Entry Via Osborne Road

Artfully designed to embody privacy, tranquility and a contemporary aesthetic, this inviting apartment offers a lifestyle that is second to none. It's quietly positioned at the rear of the premier 'Skyline' complex, surrounded by tropical greenery and resort style facilities. The spacious open layout of the apartment offers a seamless connection with the surrounding garden, providing a sense of openness and connection with nature.

- Spacious open layout perfectly set against a garden backdrop
- Large all-weather balcony prompts relaxed alfresco enjoyment
- Kitchen has gas cooktop, stone benches and soft-close joinery
- Two quiet bedrooms feature custom cabinetry and ceiling fans
- Pietra grey tiles and Calacatta marble finishes in bathrooms
- Study nook, high ceilings and engineered spotted gum floors
- Air conditioning, plantation shutters, internal laundry facilities

**Price:** Sold By Maggie Mackenzie & Bernadette Hayes



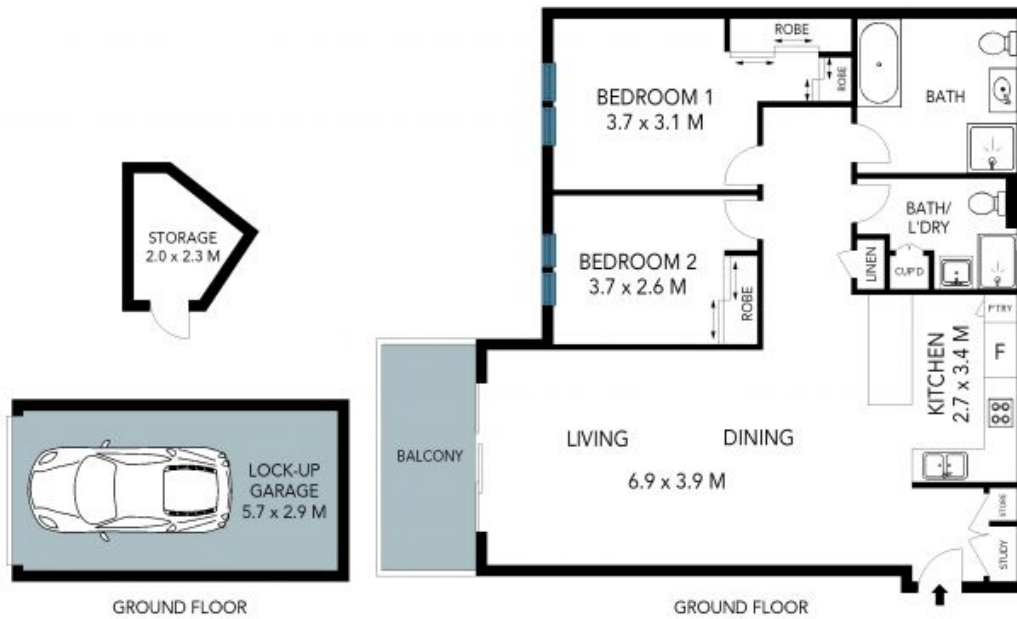
**Bernadette Hayes**

0431 558 505



**Bernadette Hayes**

0431 558 505



The site plan and floor plan are not to scale; measurements are indicative and in metres. Bushes and trees are placed for illustration purposes. Plans should not be relied on. Interested parties should make and rely on their own enquiries. All other information provided has been collected from reliable sources but cannot be guaranteed for accuracy.