



9 Whittington Way Maudsland, QLD



Amazing Lifestyle Acreage Home in Huntington Downs

This exquisite acreage home is nestled in the prestigious enclave of Huntington Downs, among architectural masterpieces and award-winning residences. Occupying just over an acre of predominantly level land, it boasts meticulously maintained gardens and lush lawn. Tucked away in a tranquil cul-de-sac, it offers enchanting vistas of the forest and hinterland and an array of lifestyle offerings.

Indoor features:

- 4 large bedrooms with ceiling fans, air-conditioning, plantation shutters, and over-height triple wardrobes
- Spacious lounge room featuring a stunning fireplace, seamlessly flowing to the outside deck
- Master suite includes a custom-fitted walk-in wardrobe and a private deck overlooking the expansive gardens
- Children's retreat servicing 3 bedrooms, with access to its own private fenced garden
- Media room with a stepped floor, fitted bar, and ample storage

Price:

Under Contract



Sean Byfield

0438 061 979



Aydan Mullin

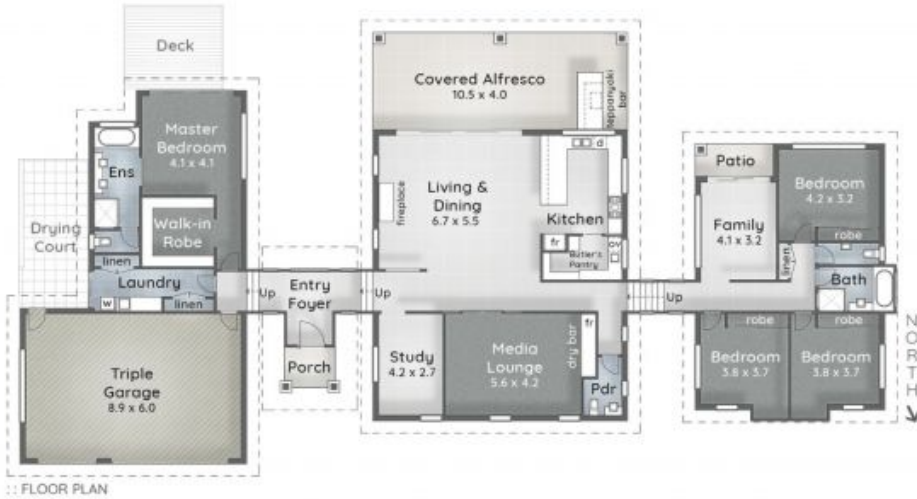
0412 490 406

9 Whittington Way
MAUDSLAND QLD



4+ 2+ 3 4,358sqm

Internal 347sqm | Alfresco, Patio & Porch 46sqm | Total 393sqm



:: FLOOR PLAN

- LEGEND**
- 1. Single Storey Residence
 - 2. Driveway Parking
 - 3. Covered Alfresco | 4. Swimming Pool
 - 5. Workshed (9.0 x 6.0) | 6. Open-Air Terrace
 - 7. Fire Pit | 8. Dry Creek Bed



:: SITE PLAN 50.5m

WHITTINGTON WAY

Whilst we have made every attempt to ensure the accuracy of the floor plan contained here, measurements are approximate, and no responsibility is taken for any errors, omissions, or misstatement. This plan is for illustrative purposes only.