



43 Dillwynnia Grove Heathcote, NSW

5 3 2

Luxury living in superb family-friendly neighbourhood

This beautifully appointed luxury home on an impressive 885.2 sqm block offers multiple living zones, five bedrooms and three newly renovated bathrooms. Boasting stunning natural light and a north facing generous backyard it is the epitome of family-friendly living. Situated in a tree-lined, convenient pocket of Heathcote close to schools and an easy walk to Heathcote train station, cafes and Karloo Pools.

- Formal lounge and dining with large bay windows and breathtaking front views
- Open plan kitchen and dining leading to a large family room and superb backyard
- Gourmet gas kitchen, Miele Pyrolytic double oven, dishwasher, stone benchtops
- Five bedrooms: 3 with built-in robes, 2 with walk-in robes, main with ensuite
- Three newly renovated designer bathrooms, main with large freestanding bathtub
- Outdoor alfresco area, ducted air-conditioning and vacuuming, timber floors
- Generous north facing flat-level backyard with shed, double car lock-up garage
- Short walk to transport, shops and Karloo pools, easy access to local schools

Price: \$2,100,000
Council Rates: \$488.07 p/q
Water Rates: \$173.29 p/q



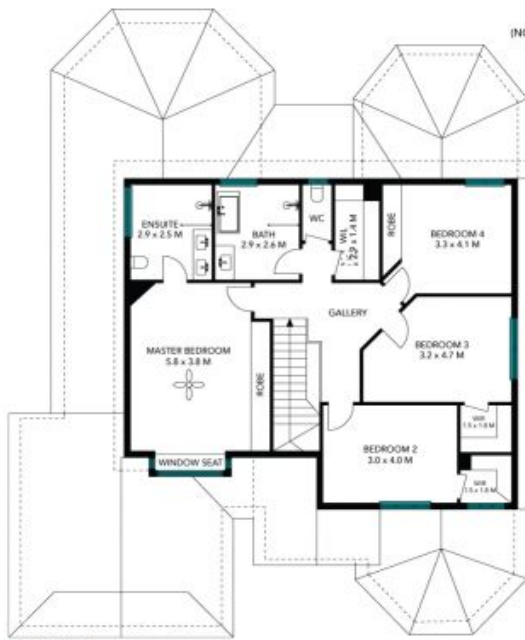
Rhys Christofa

0415 684 877

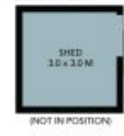
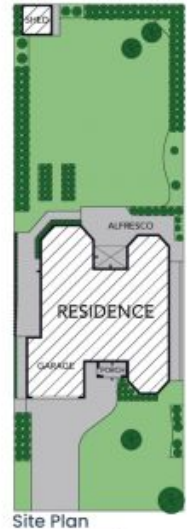


Ezra Malolo

0401 490 024



(HW)
(NOT IN POSITION)



The site plan and floor plan are not to scale; measurements are indicative and in metres. Bushes and trees are placed for illustration purposes. Plans should not be relied on. Interested parties should make and rely on their own enquiries. All other information provided has been collected from reliable sources but cannot be guaranteed for accuracy.

43 Dillwynnia Grove
Heathcote

STONE



First Floor



Ground Floor

The floor plan is not to scale; measurements are indicative and in metres. All features included in this 3D plan are for inspiration purposes only. This is not an exact replica of the property or the position of exterior elements. Plans should not be relied on. Interested parties should make and rely on their own enquiries.