



29 Montgomery Court Heritage Park, QLD

4 2 3

### Beautiful Home on a 2,015m2 allotment

Nestled on a spacious half-acre allotment within a vibrant community, this property has been more than just a house; it has been a sanctuary, a place where cherished memories were made, and lifelong friendships were formed. As the sellers embark on a new chapter of their lives, they leave behind not just a wonderful home, but also a tight-knit neighbourhood that has become an extended family.

Step through the inviting front door and be greeted by a sense of warmth and tranquillity. This property has been meticulously cared for, a true labour of love that is evident in every corner. With pride, the sellers have created a space that has brought them immense joy, and now it's time for this haven to be passed onto its next fortunate owners.

...  
...  
...

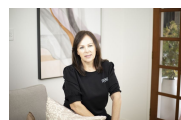
Don't miss the opportunity to become part of this incredible neighbourhood and make this exceptional property your new home. Embrace the love that has been poured into every aspect...

**Price:** \$970,000  
**Council Rates:** \$878.18 p/q



**Bridgette Griffiths**

0430 445 750



**Leanne Gunn**

0413 817 092

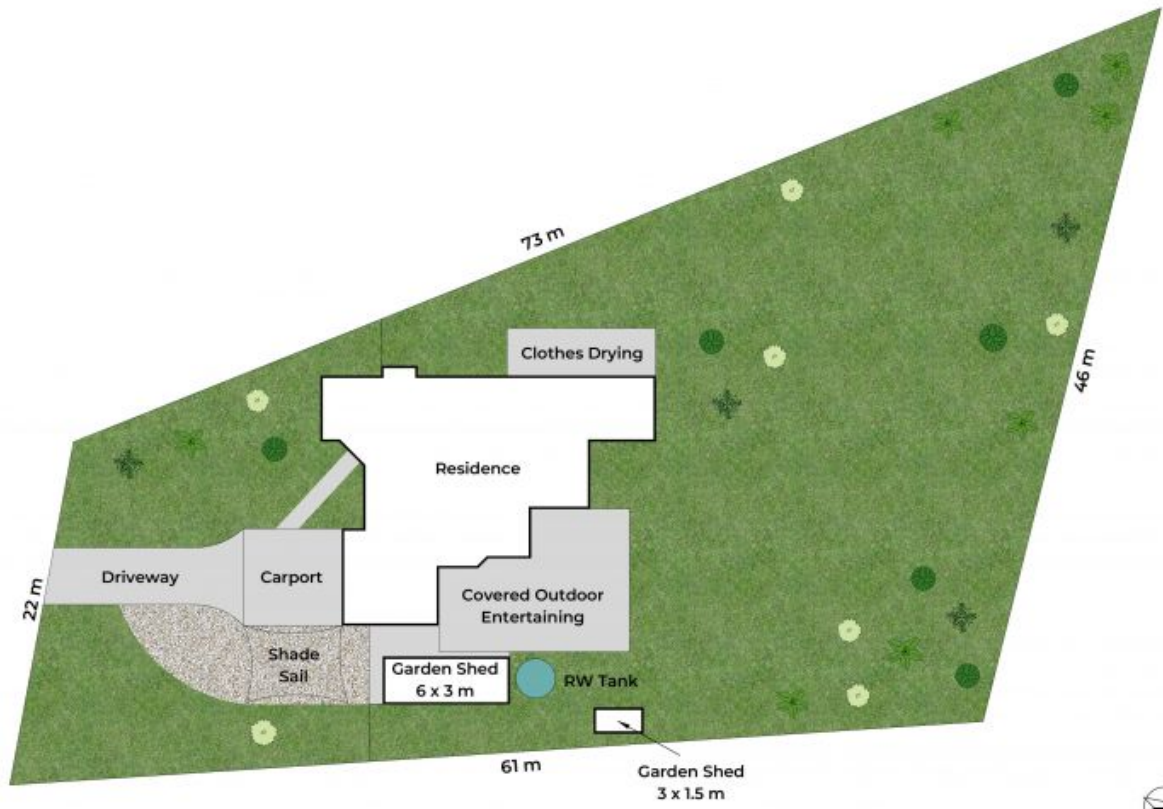




Approx. Floor Area | Internal 198 m<sup>2</sup> | External 118 m<sup>2</sup> | Total 316 m<sup>2</sup>

Unless otherwise stated, all dimensions are in metres. Star arrows indicate the upward direction. This plan and information contained within is for illustrative purposes only and not guaranteed to be exact. Interested parties should make their own enquiries.





Lot Area | 2,015 m<sup>2</sup>



Unless otherwise stated, all dimensions are in metres. Star arrows indicate the upward direction. This plan and information contained within is for illustrative purposes only and not guaranteed to be exact. Interested parties should make their own enquiries.