



104 Stanhope Road Killara, NSW 5 3 2

East side lifestyle oasis immersed in bushland panorama

Designed to impress with panoramic bushland views across the stunning northeast to rear orientation, this substantial double brick home celebrates sanctuary while embracing family entertaining in Killara's exclusive east side.

All living and dining areas enjoy innate flow to the multi-zone deck imbuing the home with an open sense of light and space. A centrepiece for fun and relaxation, the resort-size pool transports you to a place of sheer enjoyment whether cooling off or keeping fit. Upstairs bedrooms bask in abundant natural light and those restful views. Downstairs offers a fourth bedroom plus bathroom ideal for in-laws, and a fifth bedroom or study.

- 885sqm approx. of northeast to rear land with panoramic bushland views
- Double brick build, entry hall introduces rich timber floors and high ceilings
- Living spaces cater to all occasions with formal and casual areas open to deck
- Stone and shaker kitchen, European appliances, gas cooktop, ovens, m'wave
- Extra-large bedrooms, three upstairs enjoy views, master ensuite and w.i. robe

Price: For Sale \$3,950,000



Matt Payne

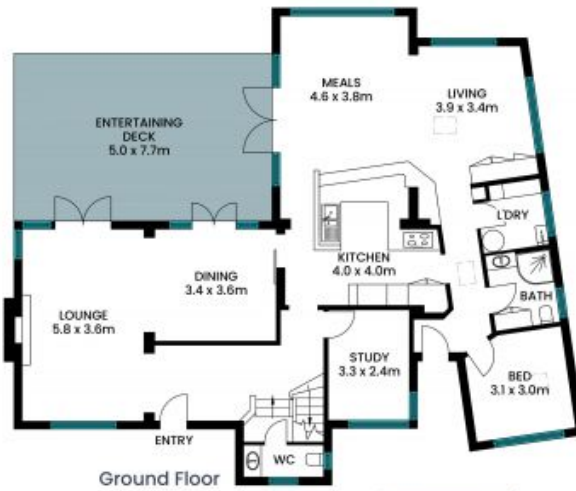
0435 825 242



Steven Kourdis

0402 555 675

104 Stanhope Road
Killara



Internal area: 260m²
Deck & Balcony area: 45m²
Total area (approx.): 305m²

The site plan and floor plan are not to scale; measurements are indicative and in metres. Bushes and trees are placed for illustration purposes. Plans should not be relied on. Interested parties should make and rely on their own enquiries. All other information provided has been collected from reliable sources but cannot be guaranteed for accuracy.