

STONE



68 Algernon Street Oatley, NSW

5 

3 

2 

Street to Deep Waterfront Federation Style Charactor Home For Sale

Escape to your very own piece of paradise with this exceptional three-story waterfront home with private boat shed. Situated on the edge of George's River, this property offers a lifestyle that combines elegance, comfort, and natural beauty.

Features:

- Deep waterfront
- 3 expansive balconies each boasting panoramic views of the Georges River
- 3 formal living areas
- Solid full brick and concrete construction
- Federation-style glass windows, ornate ceilings, and wrought iron balustrades
- 5 generous-sized bedrooms, all with built-ins and main with ensuite, plus a spacious study room
- 2 period-style bathrooms with 2 separate toilets
- Modern central kitchen with gas appliances and stone bench tops

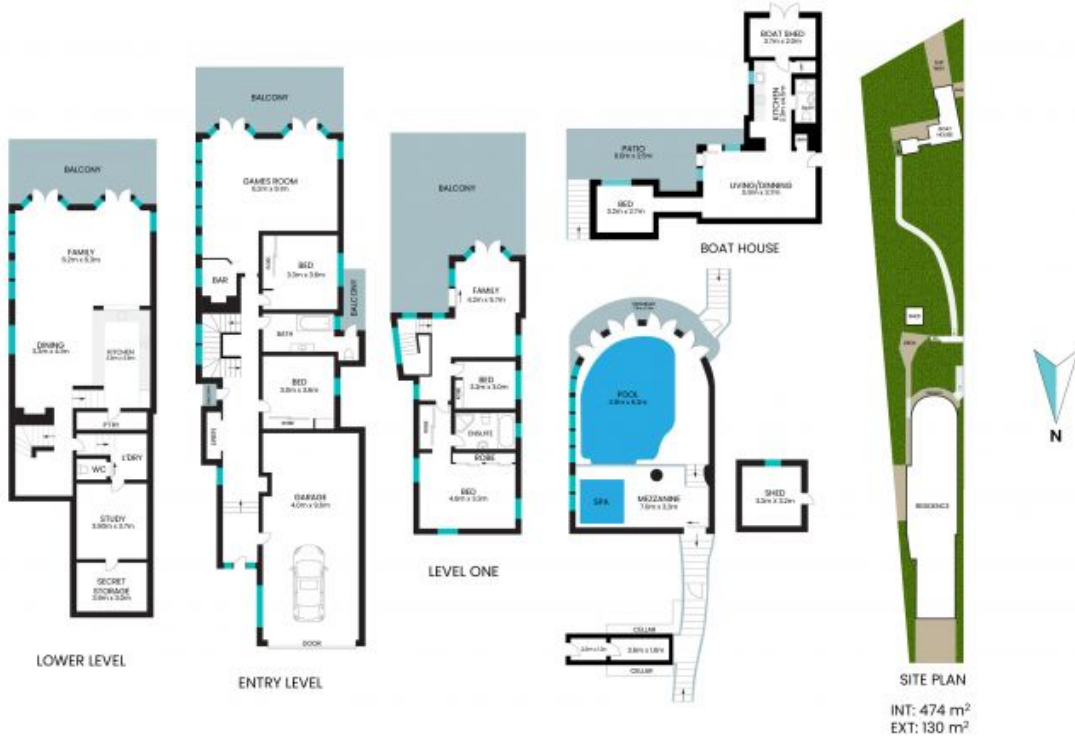
Price:

Contact Agent



Sabrina (Xiaodan)

0410 701 687
Wang



The floor plan is not to scale; measurements are indicative and in metres. Detail elements are not in position. Plans should not be relied on. Interested parties should mark and rely on their own enquiries. All other information provided has been collected from reliable sources but cannot be guaranteed for accuracy.