



1 Woolpack Street Elderslie, NSW



The Perfect Location

Welcome to this charming single-storey four bedroom home situated on a generous 556m2 corner block set in the ever popular and highly sought after suburb of Elderslie. All the hard work has been done in this renovated home that showcases a stone benchtop kitchen, large master suite with ensuite and lounge/dining that flows seamlessly to an amazing private outdoor entertaining space.

Price: \$927,000

Council Rates: \$1,600.00/year (approx)



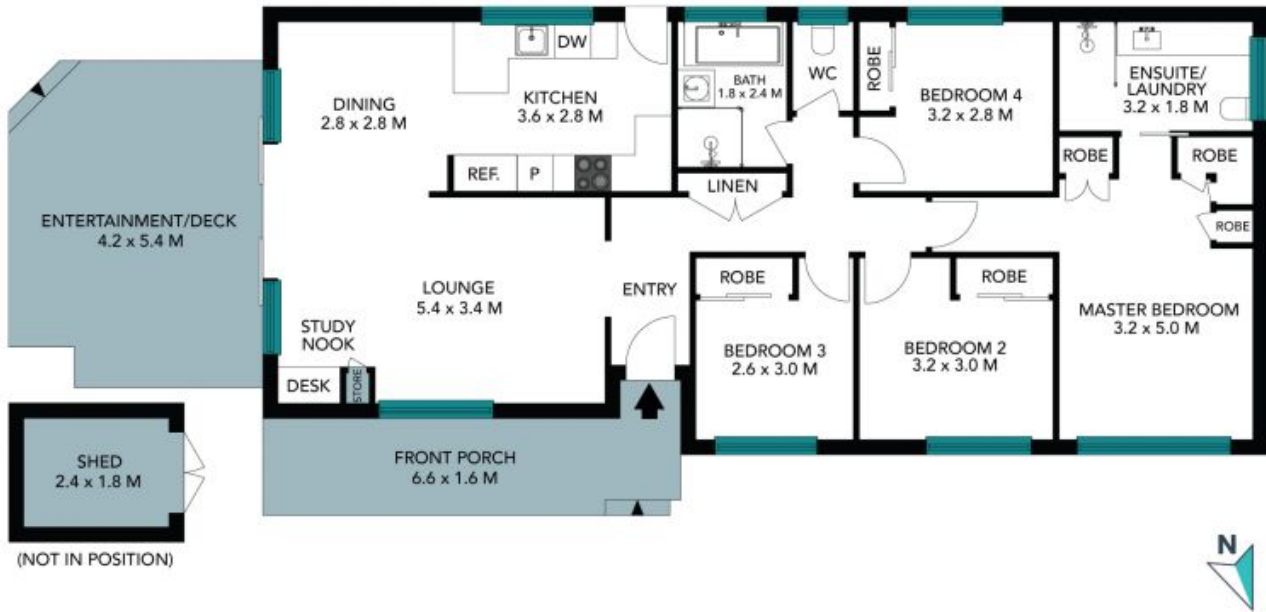
Troy Nicholson

0438 801 234



Mark Bricknell

0433 205 201



The floor plan is not to scale, measurements are indicative and in metres. Certain elements are not in position. Plans should not be relied on. Interested parties should make and rely on their own enquiries. All other information provided has been collected from reliable sources but cannot be guaranteed for accuracy.

1 Woolpack Street
Elderslie



The floor plan is not to scale; measurements are indicative and in metres. All features included in this 3D plan are for inspiration purposes only. This is not an exact replica of the property or the position of exterior elements. Plans should not be relied on. Interested parties should make and rely on their own enquiries.