



113/107-115 Pacific Highway Hornsby, NSW 2  2  1 

**Sold by Geraldine Wang & Adam Noakes 0452 562 183**

Sold by Geraldine Wang & Adam Noakes 0452 562 183

This private high floor apartment boasts impressive indoor and outdoor living spaces with constant sweeping panoramic views; open plan gas kitchen off spacious lounge/dining areas; good sized bedrooms in a security double brick building, well managed complex with a site manager, heated swimming pool, sauna, spa and gym. It is located with easy walk to Hornsby CBD, the main train/bus interchange, Westfield shopping precinct, schools and parks. It is ideal for downsizers, or a family seeking easy care living and yet enjoying long distant view.

**Price:** Sold by Geraldine Wang & Adam Noakes  
**Council Rates:** ~~0352.662/183~~  
**Water Rates:** \$173.29 p/q



**Geraldine (Xiao-Bin) Wang**  
0452 562 183



**Adam Noakes**  
0450 753 268

113/107 Pacific Highway  
Hornsby



Level Three

Level Ten

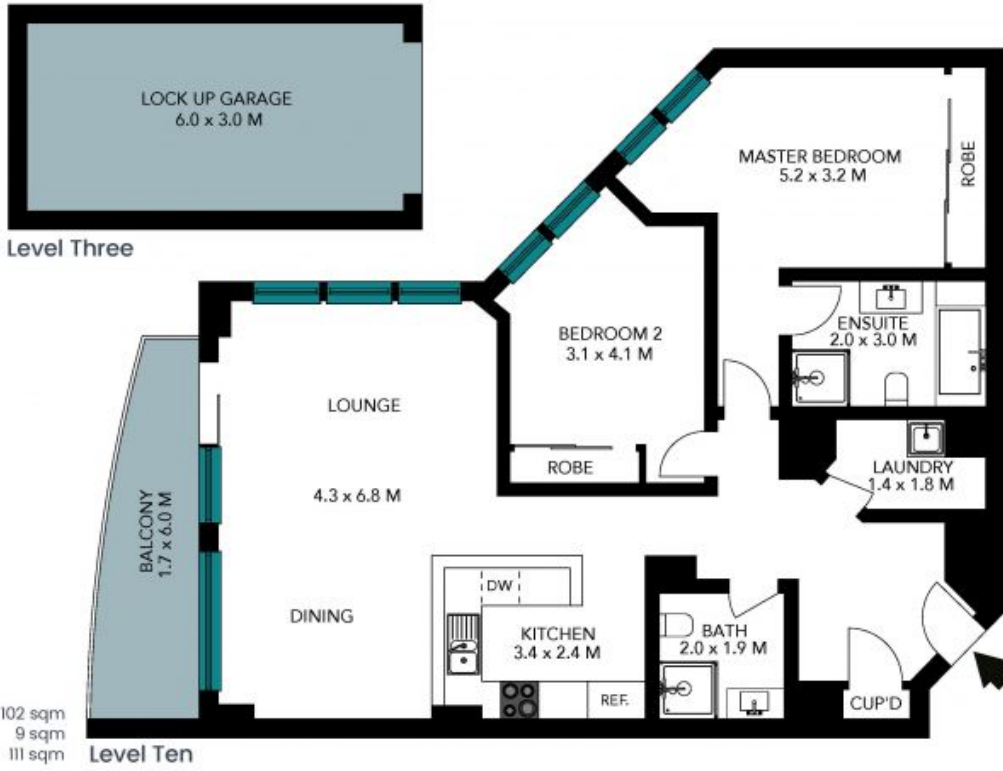
Internal Living: 102 sqm  
External Living: 9 sqm  
Total Living Area: 111 sqm



The floor plan is not to scale; measurements are indicative and in metres. All features included in this 3D plan are for inspiration purposes only. This is not an exact replica of the property or the position of exterior elements. Plans should not be relied on. Interested parties should make and rely on their own enquiries.

113/107 Pacific Highway  
Hornsby

STONE



Internal Living: 102 sqm  
External Living: 9 sqm  
Total Living Area: 111 sqm

The floor plan is not to scale, measurements are indicative and in metres. Exterior elements are not in position. Plans should not be relied on, interested parties should make and rely on their own enquiries. All other information provided has been collected from reliable sources but cannot be guaranteed for accuracy.