



11-13 Lakewood Drive Burpengary East, QLD



## Opportunity Knocks!

Situated on a flat 3000m<sup>2</sup> block, this property is located in the sought-after area of Burpengary East.

Price:

Offers Over \$850,000 Considered



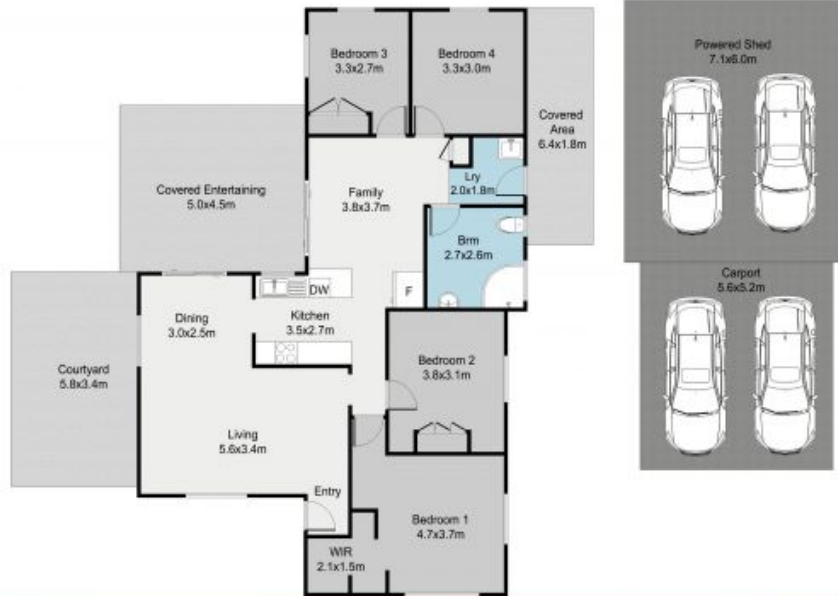
**Team Doyle**

0414 666 536



**Dee Doyle**

0407 725 626



# 11 Lakewood Drive, Burpengary East

APPROX SQM  
Internal: 114 SQM  
External: 135 SQM

The floor plan is not to scale; measurements are indicative and in metres. Exterior elements are not in position. Plans should not be relied on. Interested parties should make and rely on their own enquiries.