

2047 Wisemans Ferry Road Mangrove Mountain, NSW

3 2 4

Parukala Park

A rare opportunity to purchase this beautiful parklike 60-acre (approx.) equestrian property in the picturesque Central Coast Hinterland.

Ideally located an hour from central Sydney and 10 minutes to the M1. It has easy access to both schools and shops and is minutes from 2 golf courses. The property is almost opposite the world class jumping and dressage showgrounds of Stonewall Equestrian.

There are entrances on 2 adjoining roads, and it has 1.3 kilometres of frontage giving it vast potential for any number of rural activities.

- Equestrian improvements include
- 8 + stables & wash bay
 - A full-size dressage arena
 - Lunging areas and a European style round yard
 - Two oversized foaling stables
 - Big paddocks are separated by wide aisles enabling easy access and ample areas for hacki...

Price: Contact Agent



Scott Wall
0413 965 616



Kaela Wall
0434726944

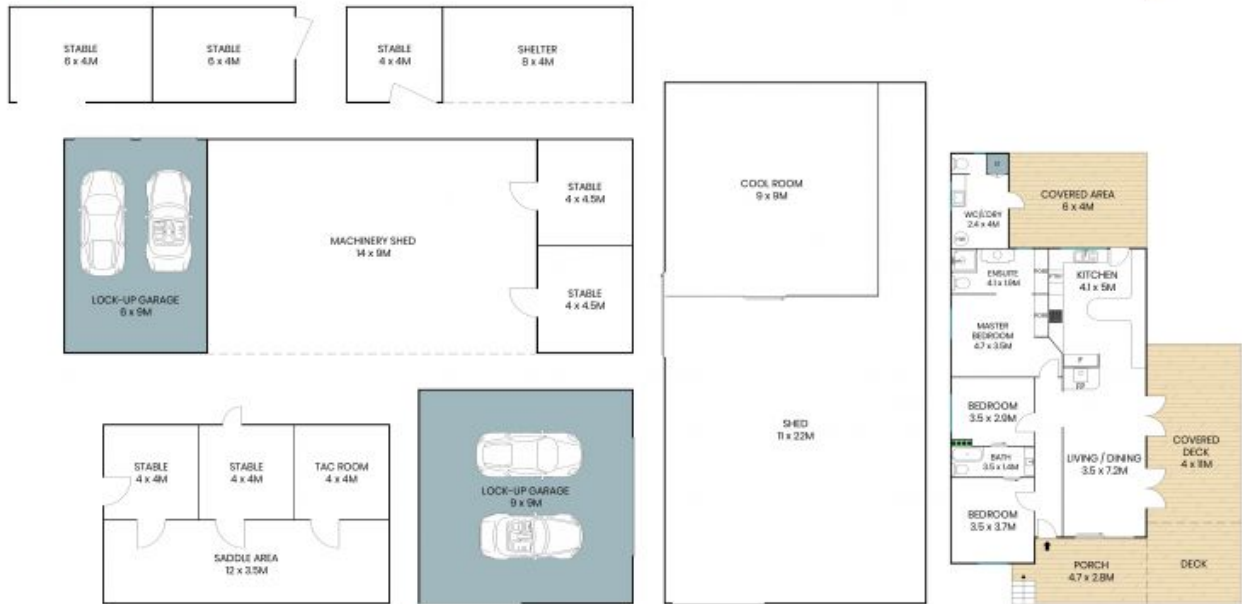


Land Area: 246,700sqm



The site plan and floor plan are not to scale; measurements are indicative and in metres. Bushes and trees are placed for illustration purposes. Plans should not be relied on. Interested parties should make and rely on their own enquiries. All other information provided has been collected from reliable sources but cannot be guaranteed for accuracy.

2047 Wisemans Ferry Road
Mangrove Mountain



Internal Area: 605sqm
External Area: 224sqm

The site plan and floor plan are not to scale; measurements are indicative and in metres. Bushes and trees are placed for illustration purposes. Plans should not be relied on. Interested parties should make and rely on their own enquiries. All other information provided has been collected from reliable sources but cannot be guaranteed for accuracy.