



9 Cleavue Street Geebung, QLD

6

3

2

Expansive Living

Boasting picturesque views thanks to its hilltop position this impeccably presented colossus showcases modern living with timeless style, taking full advantage of the Queensland climate and lifestyle, this home is the ultimate entertainer yet offers huge versatility with a flexible multi-generational floorplan over 2 sprawling levels with some of the best outdoor entertaining you will find.

- Large 625sqm block
- 6kw Solar system
- Glistening in-ground solar heated salt pool
- 2 x large water tanks
- Ducted air-conditioning
- Extra high ceilings throughout
- Roof has been Repointed 2023
- Heat pump electric hot water system

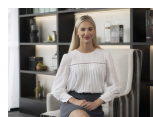
Price:

For Sale Now



Tristan Rowland

0411 572 970



Kate Veal

0455 333 306

INTERNAL 296 SQM
EXTERNAL 94 SQM
TOTAL 390 SQM



The site plan and floor plan are not to scale, measurements are indicative and in metres. Bushes and trees are placed for illustration purposes. Plans should not be relied on, interested parties should make and rely on their own enquiries.

9 Cleavue Street, Geebung

Stoneaspley.com.au

