



468 Glebe Road Adamstown, NSW

2 

1 

Your dream renovation or rebuild project starts here

Discover endless possibilities on this dual access block in central Adamstown with an original home awaiting the creative touch of a renovator or developer. The 603sqm landholding, featuring a front-situated house, invites a transformative renovation, extension, and garage addition. Unlock maximum returns with the dual frontage to Popran Lane opening doors to a second dwelling and potential subdivision (STCA).

Price:

Contact Agent



Alexandra Diktakis

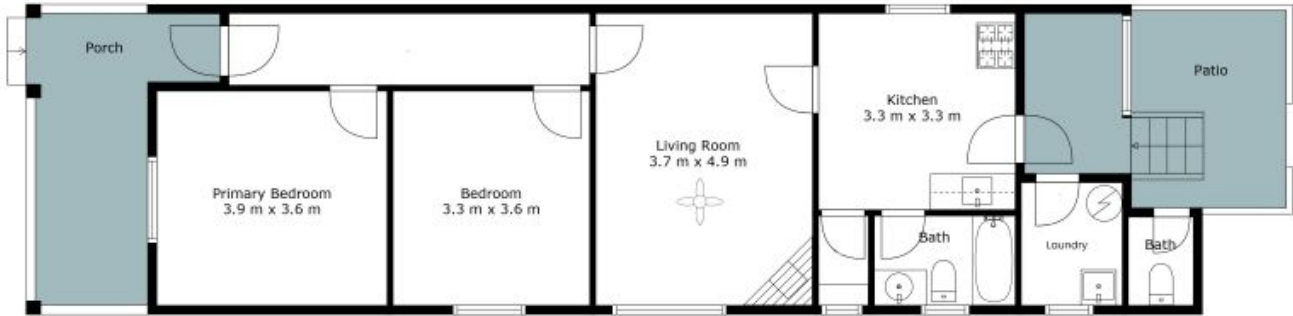
0414 772 285



Sarah O'Malley

0448 582 613

468 Glebe Road
Adamstown



The site plan and floor plan are not to scale; measurements are indicative and in metres. Bushes and trees are placed for illustration purposes. Plans should not be relied on, interested parties should make and rely on their own enquiries. All other information provided has been collected from reliable sources but cannot be guaranteed for accuracy.

