



29/36 Osborne Road Manly, NSW



### Desirable executive apartment

Situated on Manly's exclusive Eastern Hill is this stunning three bedroom apartment. Capturing mesmerising panoramic views, the "Bridgedeck" complex is one of Manly's most desirable executive apartment buildings. Offering a spacious floorplan perfect for entertaining. Footsteps to cosmopolitan Manly shops, cafes and restaurants, beaches, public transport and schools.

- Executive security complex with sweeping lawns and gardens with lift access
- Spacious three bedroom apartment with an abundance of natural light
- Modern kitchen with ample cupboard space and a dishwasher
- Separate living and dining area, living area flows out to a wrap around balcony with views
- Large main bedroom with built-in wardrobes and ensuite bathroom
- Two double bedrooms and modern bathroom featuring a separate bath
- Secure under cover car space with a storage cage available
- Stroll to the harbour, ferry, surf, Little Manly, Shelly Beach

Council rates: \$403.90 pq

Price:

Contact Agent



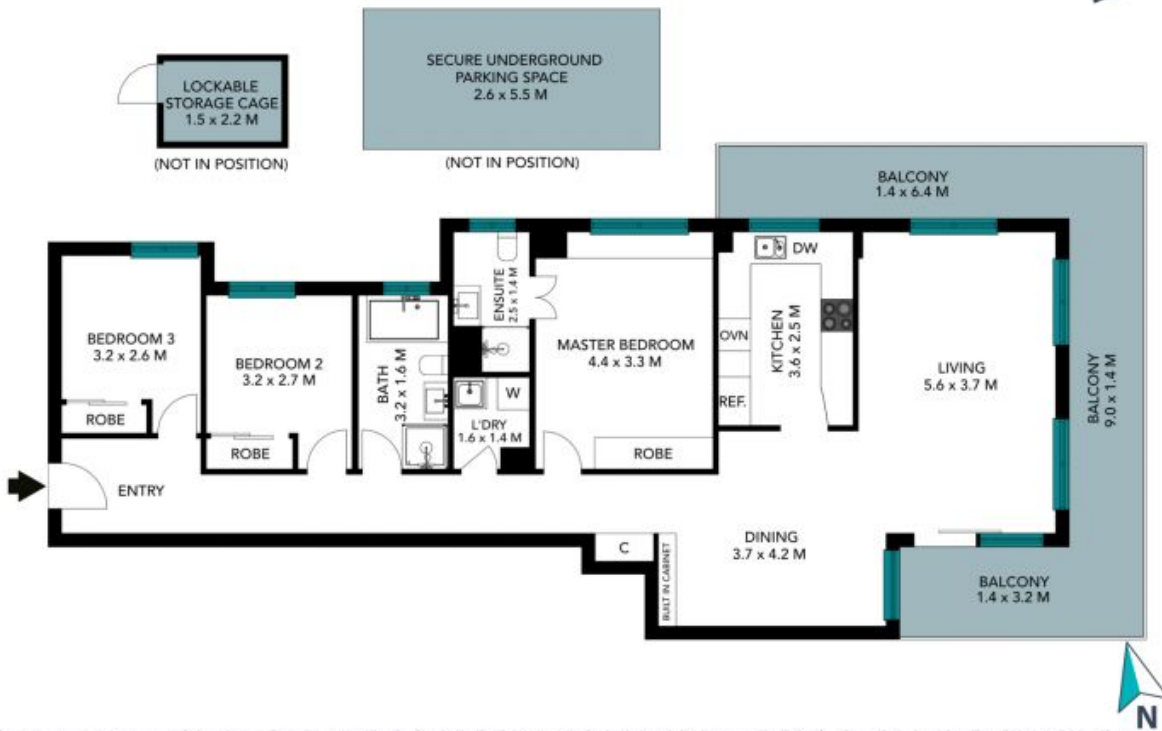
**Tim Mumford**

0421 942 693



**Catherine Wilson**

0421 966 570



The floor plan is not to scale, measurements are indicative and in metres. Exterior elements are not in position. Plans should not be relied on, interested parties should make and rely on their own enquiries. All other information provided has been collected from reliable sources but cannot be guaranteed for accuracy.

29/36 Osborne Road  
Manly



The floor plan is not to scale; measurements are indicative and in metres. All features included in this 3D plan are for inspiration purposes only. This is not an exact replica of the property or the position of exterior elements. Plans should not be relied on. Interested parties should make and rely on their own enquiries.