



22/23 Waiwera Street Lavender Bay, NSW



## Stunning Character Apartment with views of the Harbour Bridge & Lavender Bay

Set on the coveted north-east corner of the 1920s 'Bellarion Court', this character filled oversized studio apartment enjoys stunning views across Lavender Bay and of the Harbour Bridge and offers direct access to the waterfront parklands of Lavender Bay. Moments to McMahons Point village, cafes, shops, ferry, bus, trains and North Sydney CBD, the apartment offers a superb entry point to this sought-after harbourside enclave.

- High patterned ceilings, picture rails and sash windows
- Ornate timber detailing providing separation of the bedroom area
- Renovated kitchen with dining area, dishwasher and washing machine
- Oversized living area with built in storage, timber floors throughout
- 45sqm on title
- Strata titled with intercom security entry, pets on approval of owners corporation
- Footsteps to the harbour foreshore, Wendy's Secret garden
- Walk to Milsons Point and Kirribilli villages

**Price:** Contact Agent  
**Council Rates:** \$307.17 p/q  
**Water Rates:** \$173.29 p/q



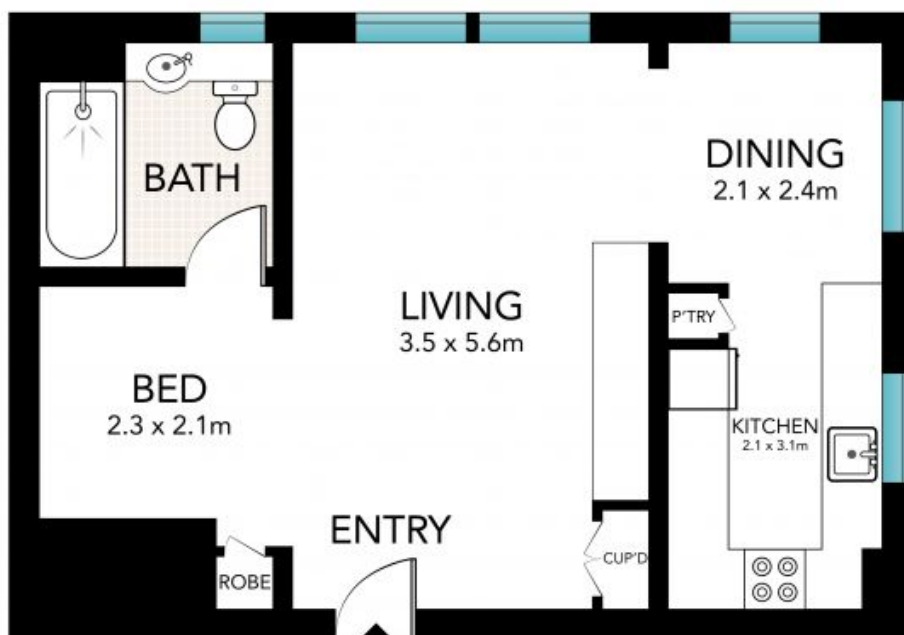
**Annika Bongiorno**

0415 194 152



**Aaron Bongiorno**

0423 621 775



ENTRY

FIRST FLOOR



SCALE (METRES)

All the information provided has been collected from reliable sources but cannot be guaranteed for accuracy. Interested persons should rely on their own enquiries. All dimensions are approximate and indicative only.



22/23 Waiwera Street, McMahon's Point