



18/114-120 The Promenade Sans Souci, NSW 3  2  2 

A stylish courtyard oasis in a former a 1930s convent

Entry VIA Broughton Street

- Light, breezy and open interiors that flow easily to the outdoors
- Smartly appointed featuring cool and easy-clean tiled flooring
- Two private courtyards offer a choice of entertainment spaces
- Quality stone kitchen with sleek gas fittings and a breakfast bar
- The three well-proportioned bedrooms all have courtyard access
- Well-lit bathroom with spa and modern ensuite off the main bedroom
- Two security car spaces in the basement car park plus air-conditioning
- Set in a well-maintained pet-friendly complex with intercom entry

Price: SOLD \$1,150,000 | Stephanie Kalos
Council Rates: \$390.00 p/q
Water Rates: \$171.00 p/q
Strata Rates: \$1,294.00 p/q



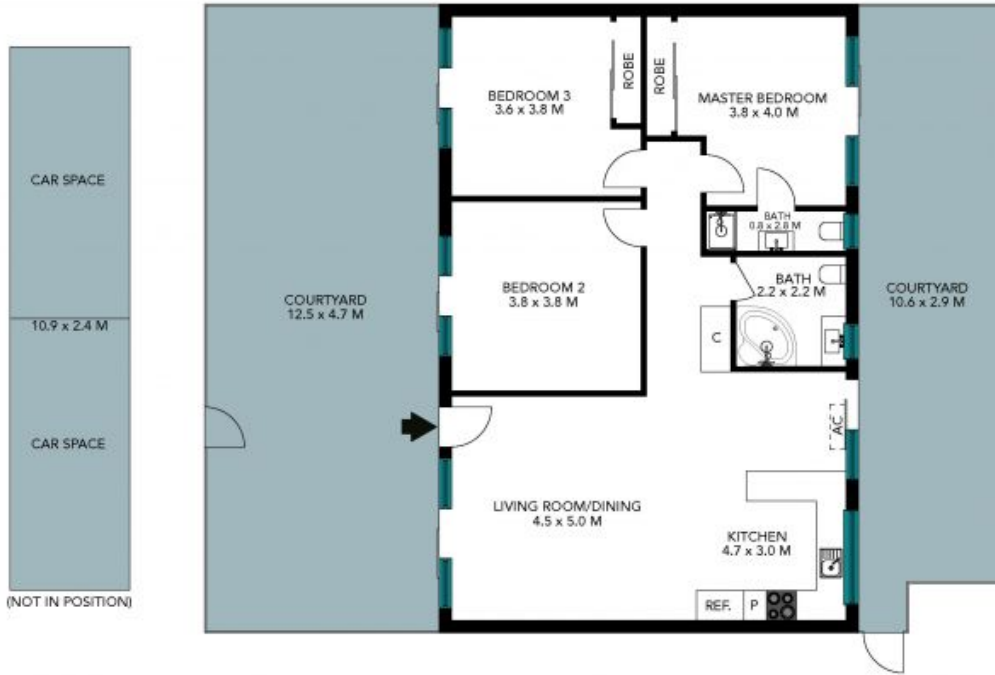
Stephanie Kalos

0403 468 216



Rory Kalos

0413 177 711



The floor plan is not to scale, measurements are indicative and in metres. Exterior elements are not in position. Plans should not be relied on, interested parties should make and rely on their own enquiries. All other information provided has been collected from reliable sources but cannot be guaranteed for accuracy.

18/114-120 The Promenade
Sans Souci

STONE



The floor plan is not to scale; measurements are indicative and in metres. All features included in this 3D plan are for inspiration purposes only. This is not an exact replica of the property or the position of exterior elements. Plans should not be relied on. Interested parties should make and rely on their own enquiries.