

6/3 Sinclair Street Wollstonecraft, NSW 2 1

Art Deco Character

Park & Enter from Hazelbank Rd

Quietly positioned at the rear of the building this apartment offers a convenient lifestyle
Elevated Ground Floor Location - Minimal Steps - Hybrid Timber Flooring Throughout

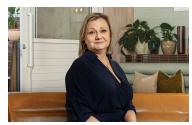
- 2 double bedrooms - Built-in-Robes to Main + Ceiling Fans
- Combined Living/Dining Room
- Spacious Eat-In-Kitchen with Dishwasher
- Modern Bathroom
- Internal Laundry Facilities
- Sunny Communal Courtyard
- 12-month lease minimum

Please note:-

* No Pets Allowed

...

Price: LEASED - \$600 per week
Bond: \$2,400
Available Date: 17/11/2023



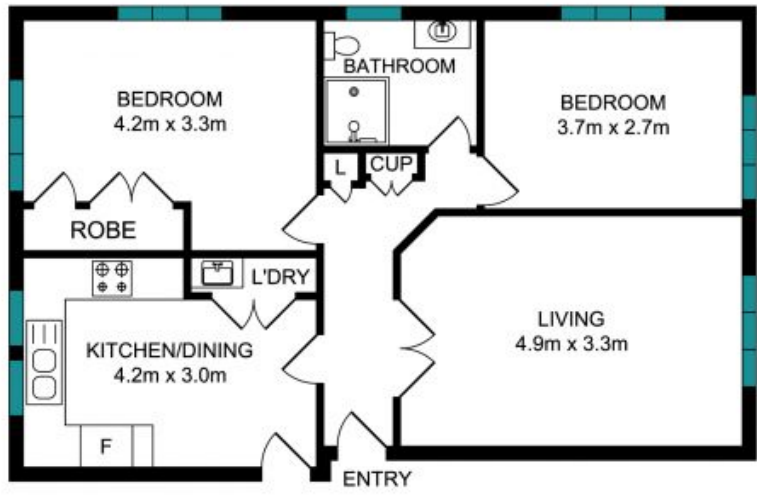
Diane Shipley

0413 137 874



Jaydn Frintzilas

0468 998 294



The Floor plan is not to scale, measurements are indicative and in meters. Exterior elements are not in position. Plan should not be relied on. Interested parties should make and rely on their own enquiries. All other information provided has been collected from reliable sources but cannot be guaranteed for accuracy.

6/3 Sinclair Street, Wollstonecraft

