



18 Dotterel Place Woronora Heights, NSW 4 [bed icon] 1 [bath icon] 3 [kitchen icon] 2 [car icon]

Impressive family-friendly resort style living

This exceptional, impeccably presented family home feels like your own private resort style oasis. Defined by open plan and spacious interiors, this quality residence offers multiple living zones throughout. Entertain in style and take advantage of the fully-equipped upstairs bar and living area with city skyline views, and the stunning north facing yard with inground saltwater heated pool and alfresco area.

Price: \$2,080,000
Council Rates: \$450.97 p/q
Water Rates: \$173.29 p/q

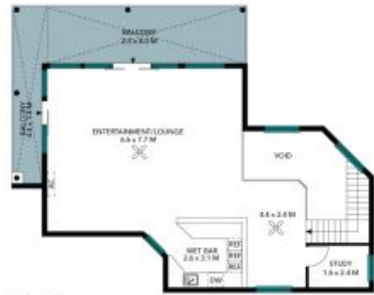


Gerard Foote
0433 421 333



Liam Pesa
0423 601 244

18 Dotterel Place
Woronora Heights



The site plan and floor plan are not to scale; measurements are indicative and in metres. Bushes and trees are placed for illustration purposes. Plans should not be relied on. Interested parties should make and rely on their own enquiries. All other information provided has been collected from reliable sources but cannot be guaranteed for accuracy.

18 Dotterel Place
Woronora Heights



First Floor



Ground Floor



The floor plan is not to scale; measurements are indicative and in metres. All features included in this 3D plan are for inspiration purposes only. This is not an exact replica of the property or the position of exterior elements. Plans should not be relied on. Interested parties should make and rely on their own enquiries.