



Tilia
15-17 Forest G



208/15 Forest Grove Epping, NSW

2 2 1

Modern 109sqm luxury apartment walking distance to Epping Station

Situated in one of the area's best locations within the esteemed Tilia development, this luxe two-bedroom apartment delivers an elite lifestyle opportunity, with sun-drenched interiors fusing warmth and stylish design and a fluid contemporary layout extending to a spacious balcony. Positioned on the second floor overlooking Forest Park, it's a haven of lock-and-leave ease, a walk to the Metro station, buses, and shops.

- Price:** \$770,000
- Council Rates:** \$316.00 p/q
- Water Rates:** \$173.29 p/q
- Strata Rates:** \$1,065.60 p/q



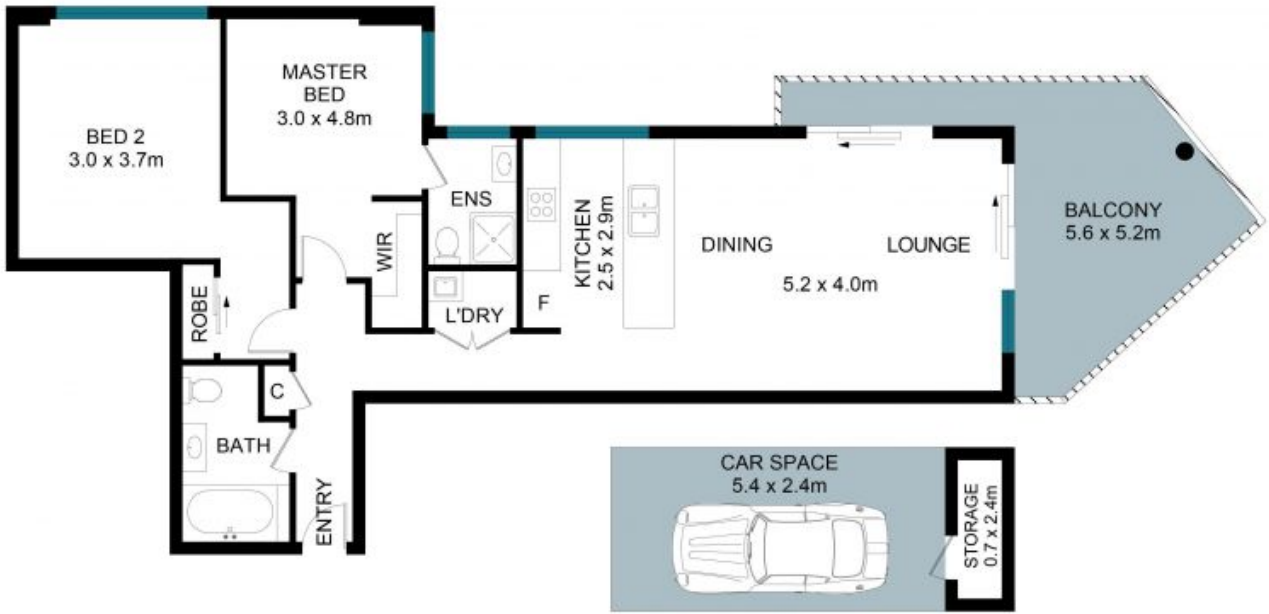
Chloe Mawass

0431 983 240



Jessica Zhou

0412 733 135



The floor plan is not to scale; measurements are indicative and in metres. Exterior elements are not in position. Plans should not be relied on. Interested parties should make and rely on their own enquiries.



208/15 Forest Grove, Epping

Land Area Approx. - 0 sqm

