



90 Wimbledon Circuit Carseldine, QLD

3 2 1

INVESTORS ALERT!!

"Currently leased with fantastic tenants until July 2024 at \$470 per week."

This neat and tidy low-set brick home has 3 good sized bedrooms, a large lounge combined meals / dining area. The large outdoor entertainment area can be accessed via the 2 sliding doors and offers a great place to have a BBQ at the end of hard day's work.

The main bedroom, located at the rear of the home - has an ensuite and a private patio. The other 2 bedrooms are a good size and near the family bathroom.

Loads of extra storage outside plus side access to park a trailer or small boat off the street.

Currently leased with fantastic tenants until July 2024 at \$470 per week.

- Main bedroom with ensuite
- 3 Bedrooms with built in robes

Price:

OFFERS OVER \$700,000



Sue Ward

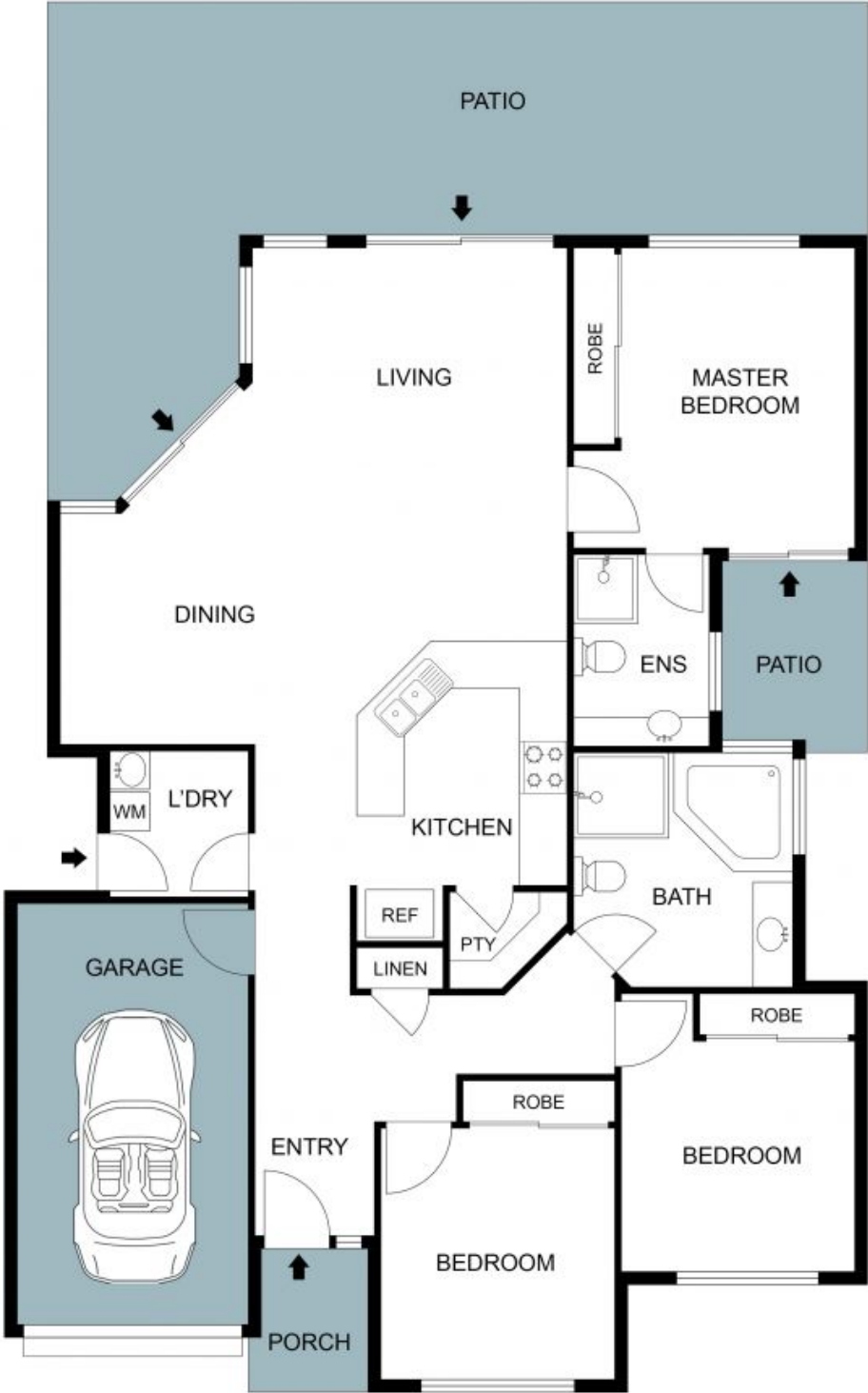
0427 073 434



Zachary Ward

0417 918 176

90 Wimbledon Circuit,
Carseldine, QLD 4034



Floor Plan

The Floor plan is not to scale; measurements are indicative and in metres. Plans should not be relied on. Interested parties should make and rely on their own enquiries. All other information provided has been collected from reliable sources but cannot be guaranteed for accuracy.