



23 Cecil Baldwin Close WEST KEMPSEY, NSW

3 2 2

### Large Level Family Home with Outdoor Entertaining

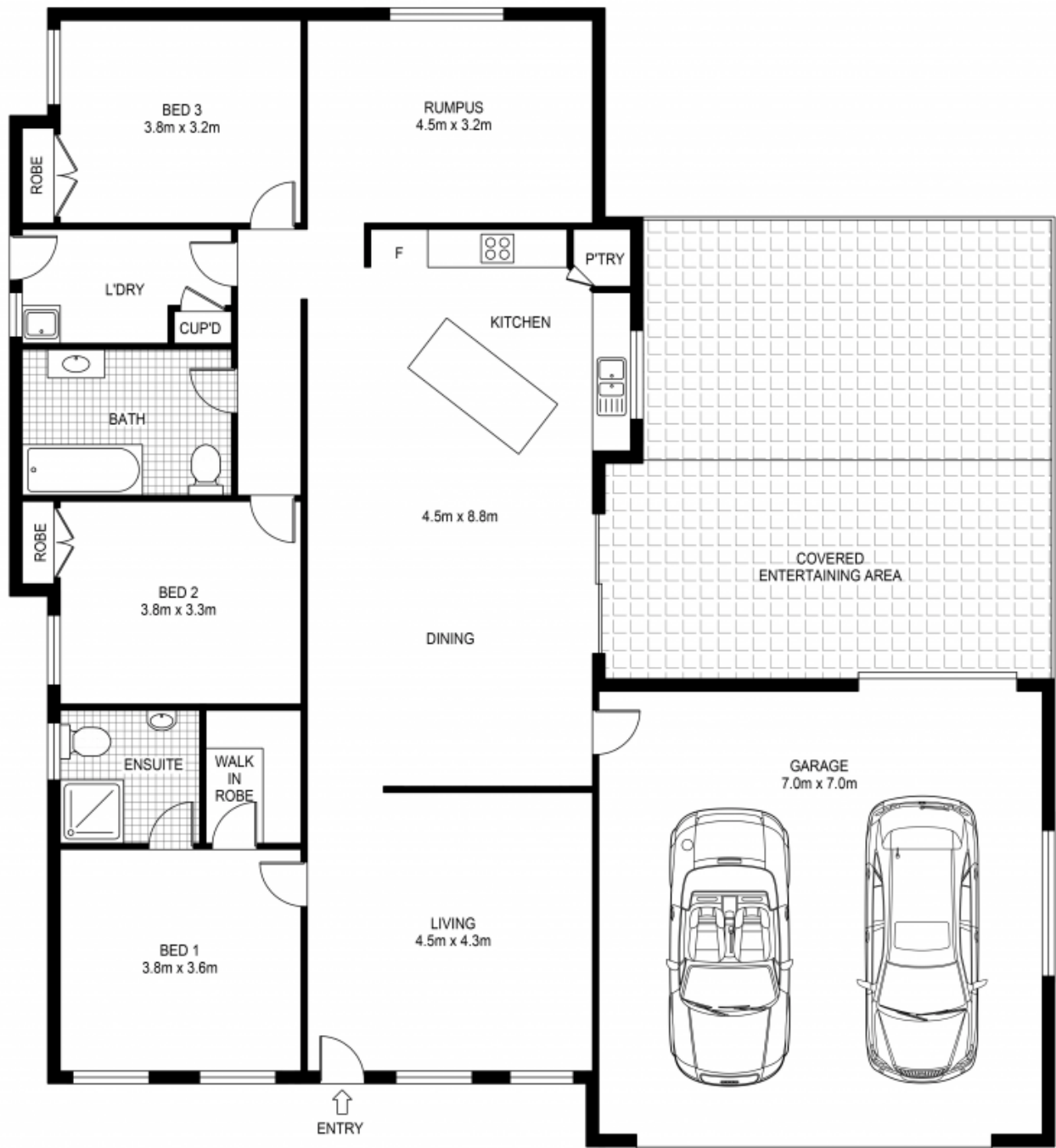
Price: \$529,000

Situated in a quiet cul-de-sac in the Bunya Pines estate is this wonderful solid rendered double brick family home on a generous 844sqm block, with a great undercover outdoor space, perfect for entertaining in the summer months.



**Carlos Peters**

0427 256 570



## 23 CECIL BALDWIN CLOSE, WEST KEMPSEY

**Disclaimer:** Dimensions are approximate. We have obtained all information in this document from sources we believe to be reliable; however, we cannot guarantee its accuracy. Prospective purchasers are advised to carry out their own investigations.



Internal Area : 146 sq.m.  
 External Area : 24 sq.m.  
 Garage Area : 49 sq.m.