



33 Kinchela Street GLADSTONE, NSW

3

1

1

### Brick Beauty in the Heart of Gladstone

Original 1980s brick home located in the heart of Gladstone, across the road from the Macleay River and Gladstone Park with no interruptions - this home with its delightful floorplan and rear lane access would make a great family home.

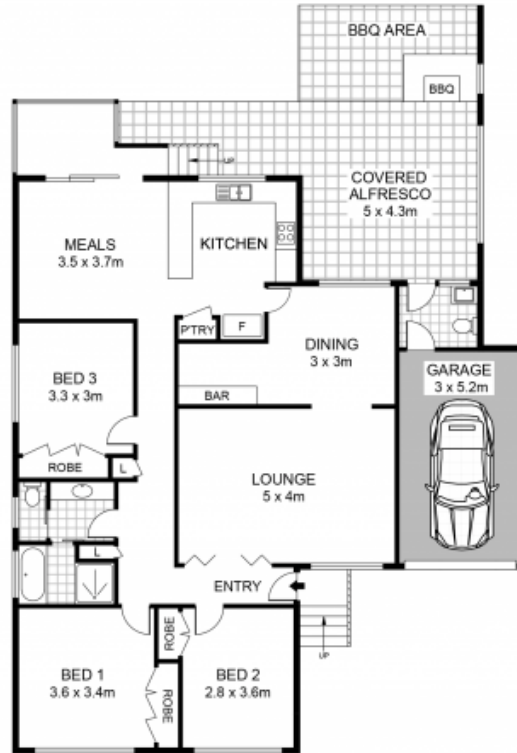
Price:

Contact Agent



**Carlos Peters**

0427 256 570



**33 KINCHELA STREET, GLADSTONE**

Disclaimer: Dimensions are approximate. We have obtained all information in this document from sources we believe to be reliable; however, we cannot guarantee its accuracy. Prospective purchasers are advised to carry out their own investigations.



Internal Area : 119 sq.m.  
 External Area : 45 sq.m.  
 Garage Area : 16 sq.m.