



22 Alan Watt Crescent Casey, ACT

4 2 2

### The perfect home that ticks all the boxes!

Built by award-winning Hotondo Homes and located in Spring Bank Rise, this former display home is Beautifully finished inside and out with high-quality inclusions. This 276 sqm residence offers 4 spacious bedrooms and multiple living areas including an upstairs rumpus and is spread over a meticulously designed 2 level floorplan. Created with the indoor-to-outdoor flow in mind creating sun-drenched and airy spaces throughout, and a large alfresco that overlooks the beautifully landscaped gardens.

**Price:** SOLD - \$1,125,000



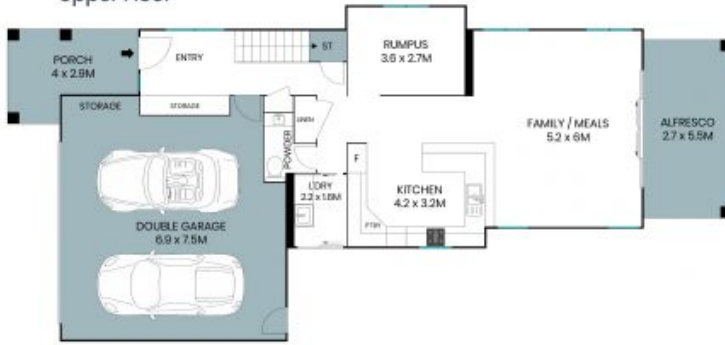
**Jess Smith**

0410 125 475

22 Alan Watt Crescent  
Casey



Upper Floor



Lower Floor



Site Plan



The site plan and floor plan are not to scale; measurements are indicative and in metres. Bushes and trees are placed for illustration purposes. Plans should not be relied on. Interested parties should make and rely on their own enquiries. All other information provided has been collected from reliable sources but cannot be guaranteed for accuracy.

22 Alan Watt Crescent  
Casey



Lower Floor



Lower Floor



The floor plan is not to scale; measurements are indicative and in metres. All features included in this 3D plan are for inspiration purposes only. This is not an exact replica of the property or the position of exterior elements. Plans should not be relied on. Interested parties should make and rely on their own enquiries.