



1010/3 Village Place Kirrawee, NSW 1 [Bed icon] 1 [Bath icon] 1 [Car icon]

### Top Floor Luxury

A rare opportunity, this unique apartment must be inspected to truly appreciate its spacious qualities. Facing north on the tenth floor, the perfect aspect for all day sunshine and total privacy from the outside world. Offering panoramic views spanning from the Blue Mountains across Sydney CBD and through to Botany Bay and Cronulla waterways. The view is spectacular by day, but even more breathtaking after dark.

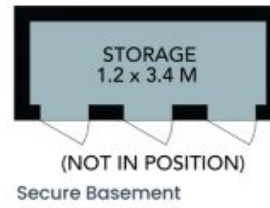
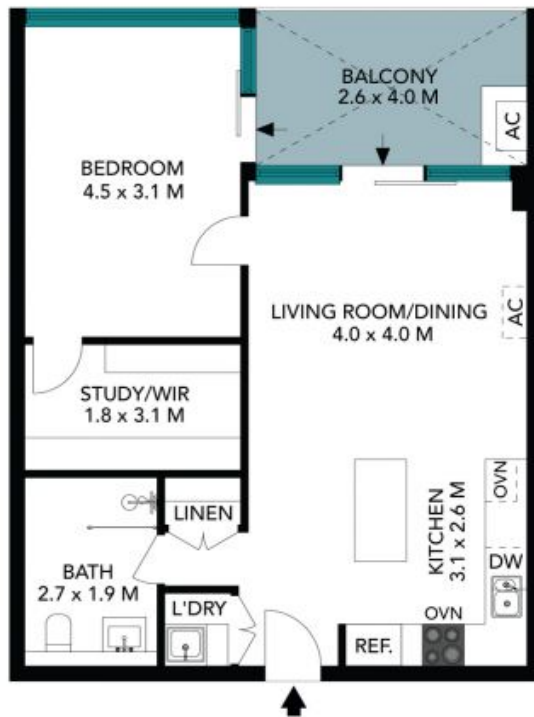
- No other one bedroom unit in South Village benefits from this unique floor plan
- Spacious living area features plush carpet, wall mounted TV and gas outlet
- Current owner has chosen to reclaim the study as an impressive walk-in robe
- Modern darker tone kitchen with stone bench tops and splash backs
- Custom built bench is perfect for dining and doubles your preparation space
- LED lighting, concealed fridge, quality inclusions and natural gas cooktop
- Stylish bathroom features rainwater shower and handy hidden storage
- Oversized bedroom enjoys floor to ceiling windows for uninterrupted views

**Price:** \$750,000  
**Council Rates:** \$358.00 p/q  
**Water Rates:** \$173.00 p/q



**Lora Moore**

0418 455 050



The floor plan is not to scale; measurements are indicative and in metres. Exterior elements are not in position. Plans should not be relied on. Interested parties should make and rely on their own enquiries. All other information provided has been collected from reliable sources but cannot be guaranteed for accuracy.