



20 Plant Street Balgowlah, NSW

3

2

1

Updated character home with showstopping views

Quietly nestled on a huge, north-facing 803sqm block, this two-storey brick home is set against a magnificent backdrop of Middle Harbour views and offers an ultimate lifestyle escape in a sought-after harbourside location. In good condition with newly-refreshed interiors, and plenty of outdoor entertaining spaces, this charming home is the perfect family haven.

Price: \$1,300 per week

Available Date: 20/12/2023



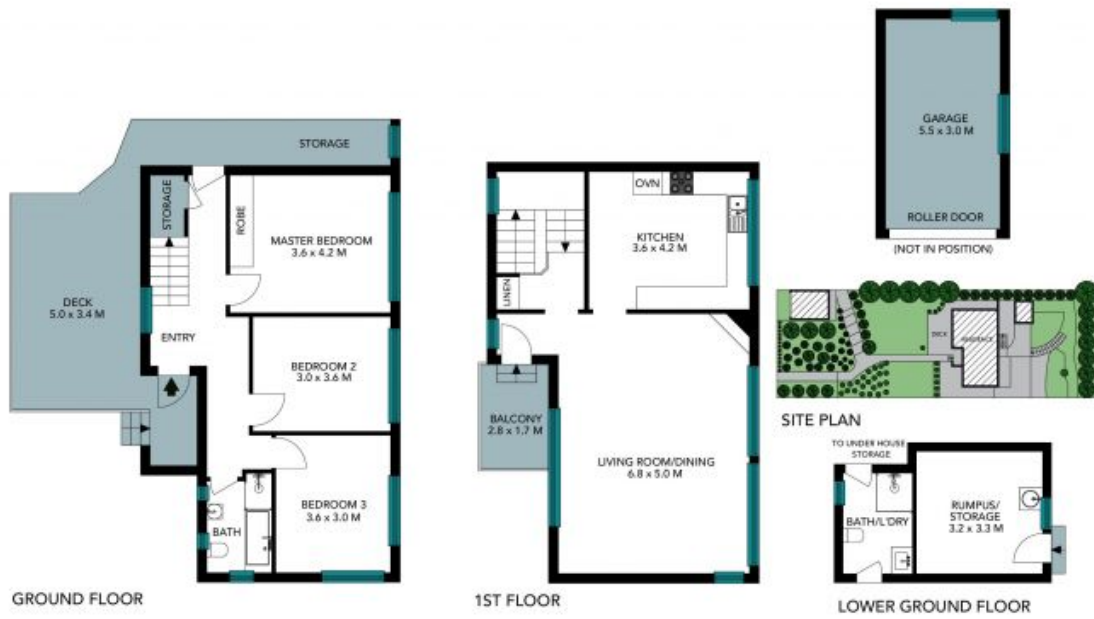
Sarah Cass

0478 086 411



Claire Kinnaird

0432 038 151



The site plan and floor plan are not to scale, measurements are indicative and in metres. Bushes and trees are placed for illustration purposes. Plans should not be relied on, interested parties should make and rely on their own enquiries. All other information provided has been collected from reliable sources but cannot be guaranteed for accuracy.

20 Plant Street, Balgowlah





GROUND FLOOR



1ST FLOOR



LOWER GROUND FLOOR



The floor plan is not to scale, measurements are indicative and in metres. All features included in this 3D plan are for inspiration purposes only. This is not an exact replica of the property or the position of exterior elements. Plans should not be relied on. Interested parties should make and rely on their own enquiries.

20 Plant Street, Balgowlah

