



30/5-7 Hoddle Avenue Bradbury, NSW

2

1

Exceptional opportunity: Affordable apartment in Macarthur

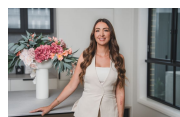
Looking to make your mark in the Macarthur property market? This low-maintenance apartment presents an outstanding opportunity to step into the market at an affordable price point.

Price: \$335,000



Anthony Grima

0421 228 414



Rebecca Philp

0403 613 271

30/5-7 Hoddle Avenue
Bradbury



The floor plan is not to scale. Measurements are indicative and in metres. Exterior elements are not in position. Plans should not be relied on. Interested parties should make and rely on their own enquiries. All other information provided has been collected from reliable sources but cannot be guaranteed for accuracy.

30/5-7 Hoddle Avenue
Bradbury



The floor plan is not to scale; measurements are indicative and in metres. All features included in this 3D plan are for inspiration purposes only. This is not an exact replica of the property or the position of exterior elements. Plans should not be relied on. Interested parties should make and rely on their own enquiries.