



308 Lumeah Road Buninyong, VIC

4

2

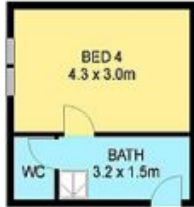
4

A Massive Block In the Heart of Buninyong!

Located a short distance from Warrenheip St shops and a 7 iron to the golf course this massive block set on a large parcel of land approx. 3547sqm with good frontage, ready to occupy, renovate, extend, rebuild or develop (STCA).

Price: \$900,000 - \$950,000

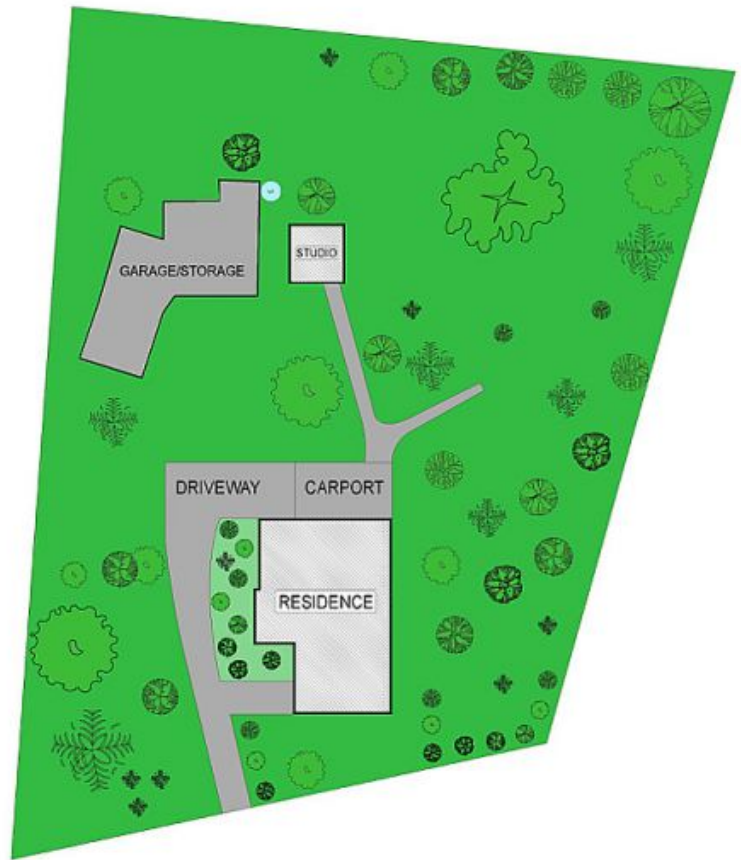
Stone Real Estate -
Head Office



(NOT IN POSITION)



FLOOR PLAN



SITE PLAN

DISCLAIMER

PLANS SHOWN ARE FOR MARKETING PURPOSES ONLY, ALL DIMENSIONS ARE APPROXIMATE AND NOT TO SCALE. THEY ARE SUBJECT TO ERRORS AND INACCURACIES AND NO LIABILITY WILL BE ACCEPTED. INTERESTED PARTIES SHOULD MAKE THEIR OWN INQUIRES.