

132 Ironwood Street Aspley, QLD

5 2 2

Bespoke Renovation

Without peer or rival, this mammoth-sized abode boasts one of the widest frontages you will ever see in a low-set home. Impeccably renovated, this sprawling home has been crafted at a whole other level. Designed by Designing Interiors Brisbane, this home offers second-to-none finishes and is positioned in Aspley Grove against the reserve. Its position is only rivaled by its size.

- Huge 778sqm flat block
- Colonial inspired design
- Bespoke renovated
- Bluechip location
- Working fireplace
- Water tank with electric pump
- NBN fibre to the premises
- Massive attic storage

Price: Offers over \$1,499,000



Tristan Rowland

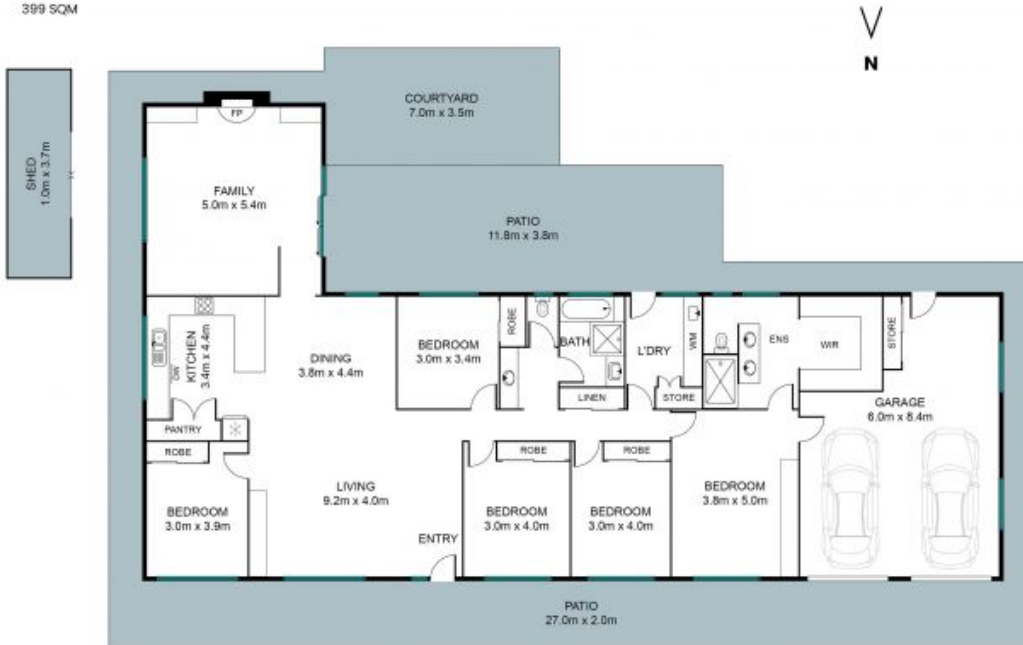
0411 572 970



Kate Veal

0455 333 306

INTERNAL 237 SQM
EXTERNAL 162 SQM
TOTAL 399 SQM



The site plan and floor plan are not to scale; measurements are indicative and in metres. Bushes and trees are placed for illustration purposes. Plans should not be relied on. Interested parties should make and rely on their own enquiries.

132 Ironwood Street, Aspley

Stoneaspley.com.au

