



24 Meadowvale Road Appin, NSW

4 2 2

Welcome home

Nestled within the picturesque Appin Valley Estate, this exquisite residence bathes in natural light, showcasing a thoughtful design that seamlessly blends convenience and a seamless indoor/outdoor living experience.

Spanning an expansive 727sqm block, this property is an ideal haven for those seeking ample space for their family and friends to enjoy.

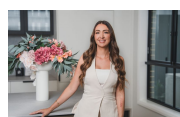
Adorned with the finest inclusions, you're bound to be captivated the instant you step through the door.

Price: \$1,205,000



Anthony Grima

0421 228 414



Rebecca Philp

0403 613 271



(NOT IN POSITION)



The floor plan is not to scale, measurements are indicative and in metres. Certain elements are not in position. Plans should not be relied on. Interested parties should make and rely on their own enquiries. All other information provided has been collected from reliable sources but cannot be guaranteed for accuracy.

24 Meadowvale Road
Appin



The floor plan is not to scale; measurements are indicative and in metres. All features included in this 3D plan are for inspiration purposes only. This is not an exact replica of the property or the position of exterior elements. Plans should not be relied on. Interested parties should make and rely on their own enquiries.