

41 Tryon Road Lindfield, NSW

6

4

4

Grandeur and modern luxury in blue-chip east side village

Magnificent in every respect, this palatial two-storey residence "Lightcliff" rests in a dress-circle village position just 550m to rail. Retaining its original c.1890's character and grandeur, the home is brought to life with highly refined contemporary updates that maximise open ambience, natural light, and luxurious finishes.

Formal and casual living areas, and king- size bedrooms indulge family with an abundance of space. The updated modern bathrooms are a tribute to the beauty of marble. Head outdoors for easy entertaining on the covered poolside terrace in the privacy of the garden. This home must be seen to be truly appreciated.

- 1138sqm approx. of north facing land, dual street access via rear Valley Lane
- Interiors showcase spectacular 11' high ceilings and a resplendent staircase
- Grand two-zone formal lounge streaming with light, ornate beautiful fireplaces
- Spacious open plan living and dining, built-in cabinetry, charming TV lounge
- Granite and gas kitchen with European appliances, butler's pantry/laundry



Steven Kourdis

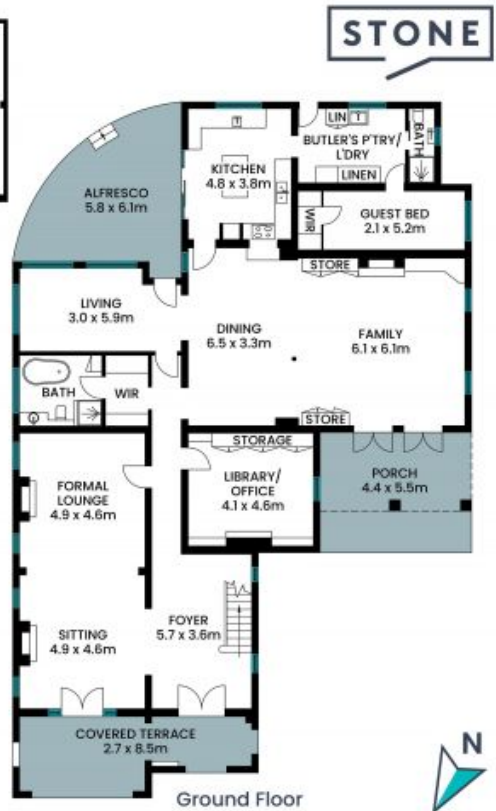
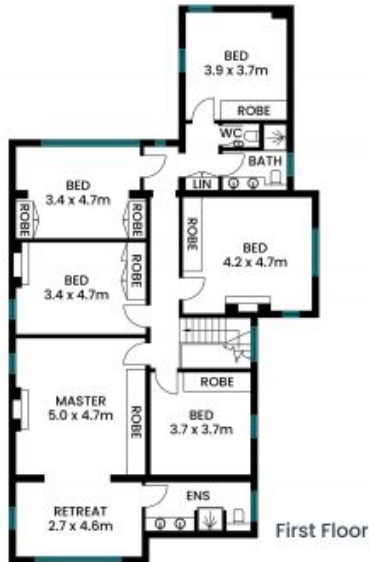
0402 555 675



Matt Payne

0435 825 242

41 Tryon Road
Lindfield



STONE



Internal area (approx.): 485m²

The site plan and floor plan are not to scale; measurements are indicative and in metres. Bushes and trees are placed for illustration purposes. Plans should not be relied on. Interested parties should make and rely on their own enquiries. All other information provided has been collected from reliable sources but cannot be guaranteed for accuracy.