

6 Weeping Fig Court Flagstone, QLD

4 2 2

**Room for your toys on a 1000m2 block with great side access.**

With full vacant possession available from 22nd December this is an opportunity not to be missed in popular region on top of local amenities yet far enough away for peace and serenity. Conveniently placed heart of Flagstone, this family home is both spacious and practical. A dream 1000 sqm flat block is simply perfect for a growing family and has bags of room for pets to roam, a swimming pool even a large shed in the future.

- 4 bedrooms all with robes, 2 bathrooms (en suite to master bedroom)
- Open-plan Kitchen and living /dining spaces
- Split-system air conditioning
- Expansive outdoor entertainment area opening to the vast flat rear yard
- Coles & Flagstone Village Shops: Just 600m away
- Colourbond roof - Great vehicle access on both sides - Fly screens and security screens
- Council rates: \$602.20 pq approx + Water rates: \$261.15 pq approx

**Price:** \$655,000



**Andrew Colley**

0488 217 803



**Andrew Colley**

0488 217 803

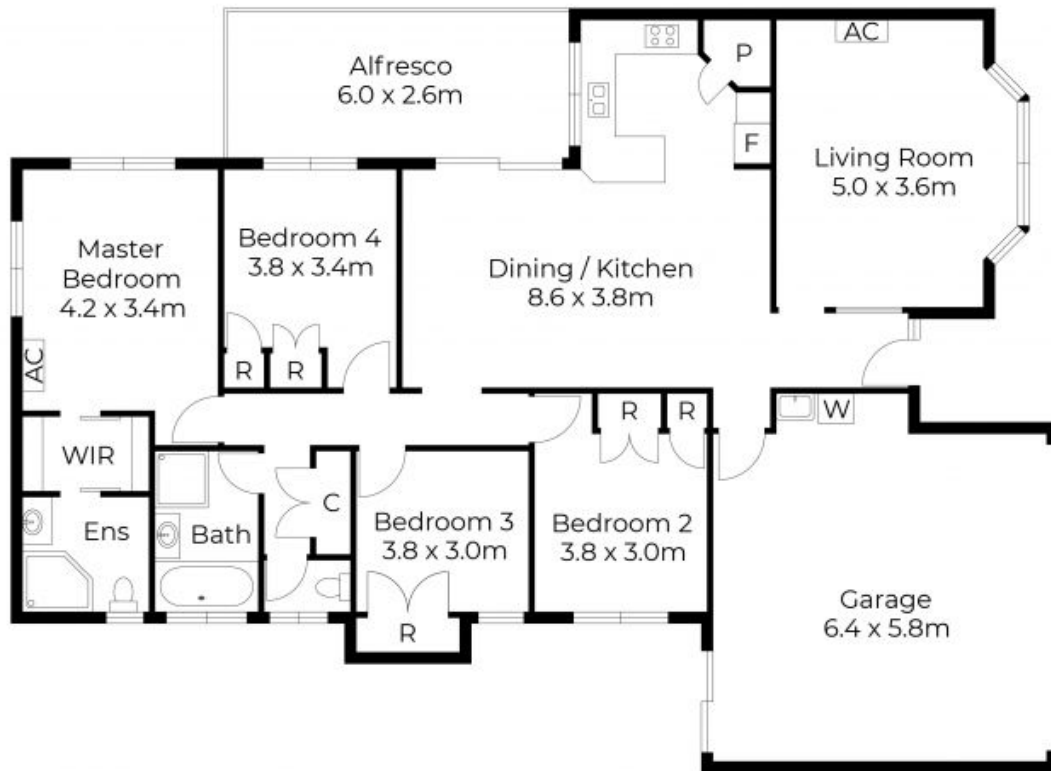


Ground Level



Floor plans and site plans are for illustrative purposes only. They are not part of any legal document or title and are subject to errors, omission, and inaccuracies. Whilst every attempt has been made to ensure the accuracy of this plan, measurements of doors, windows, rooms, cupboards etc are approximate only.

APPROXIMATE AREA  
LIVING AREA : 165 m<sup>2</sup>  
TOTAL AREA : 181 m<sup>2</sup>



6 Weeping Fig Ct, Flagstone

Floor plans and site plans are for illustrative purposes only. They are not part of any legal document or title and are subject to errors, omission, and inaccuracies. Whilst every attempt has been made to ensure the accuracy of this plan, measurements of doors, windows, rooms, cupboards etc are approximate only.

**APPROXIMATE AREA**  
 LIVING AREA : 130 m<sup>2</sup>  
 TOTAL AREA : 180 m<sup>2</sup>