

404/1-5 Chapman Avenue Beecroft, NSW 2 1 2 2

Elite top-floor apartment steps from shops

Presenting first-class living at its finest, this exquisite two-bedroom unit atop 'Chapman Green' constructed by Northpoint boasts meticulously designed open-plan living and dining zones, and an ideal north-facing orientation, drawing in an abundance of natural light through floor-to-ceiling windows. Blending elegance and convenience, it's perched within easy reach of Beecroft station and village delights.

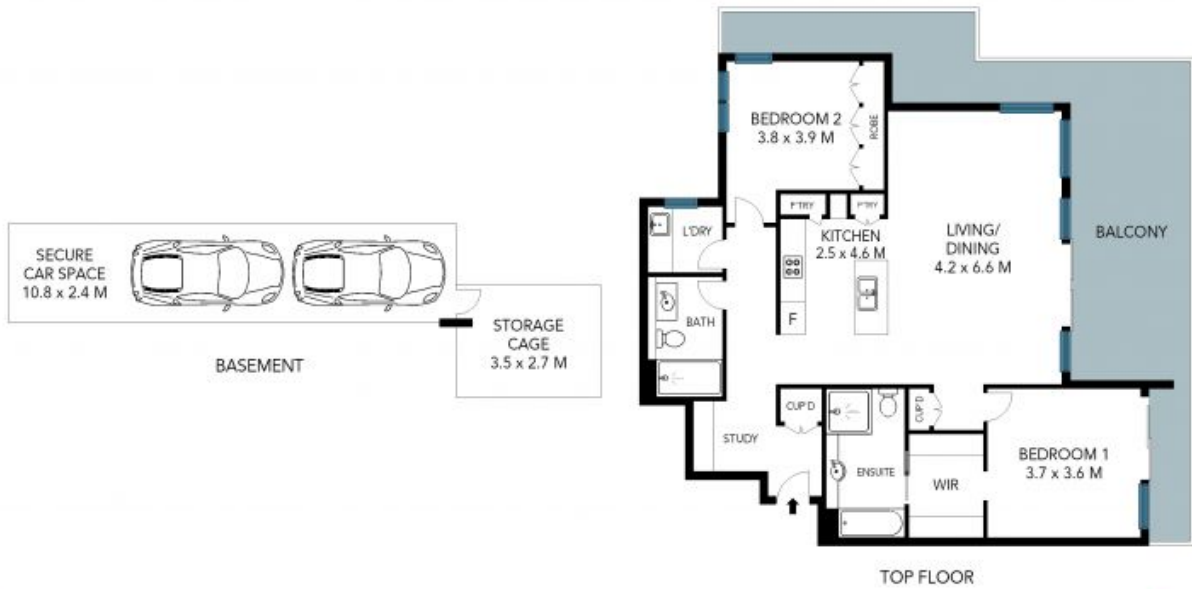
Price: Contact Agent
Council Rates: \$368.20 p/q
Water Rates: \$173.29 p/q
Strata Rates: \$1,814.80 p/q



Jeff Jianfu Luo
0425 286 668



Wenjie Luo
0433 971 007



Internal Size: 102sqm
Total Size: 172sqm



The site plan and floor plan are not to scale; measurements are indicative and in metres. Bushes and trees are placed for illustration purposes. Plans should not be relied on. Interested parties should make and rely on their own enquiries. All other information provided has been collected from reliable sources but cannot be guaranteed for accuracy.