

12 Riverview Street Chiswick, NSW



Double brick family home offers endless potential

Resting on a generous 632sqm corner block and boasting dual street frontage, this spacious family home showcases a captivating blend of vintage character and modern style, while offering superb potential for redevelopment (STCA). Its highly sought-after location provides easy access to waterside reserves, bus services and Chiswick Wharf, while only moments from local schools and village shops.

- Versatile layout presents defined living and dining spaces off central hallway
- Charming interiors with soaring ceilings, timber floors and leadlight windows
- Covered entertaining setting, sun drenched backyard, two separate balconies
- Stone island kitchen with gas cooktop, premium appliances and walk-in pantry
- Four good sized bedrooms, fourth bedroom easily used for second living room
- Two updated bathrooms includes lavish full main with separate shower and bath
- Air conditioning, gas heating bayonets, plantation shutters, storage cupboards
- Driveway leads to secure lock-up garage and underhouse storage/workshop area

Price: Contact Agent
Council Rates: \$839.00 p/q
Water Rates: \$173.29 p/q



Joseph Tropiano

0401 002 211



Irma Rinaudo

0426 240 502

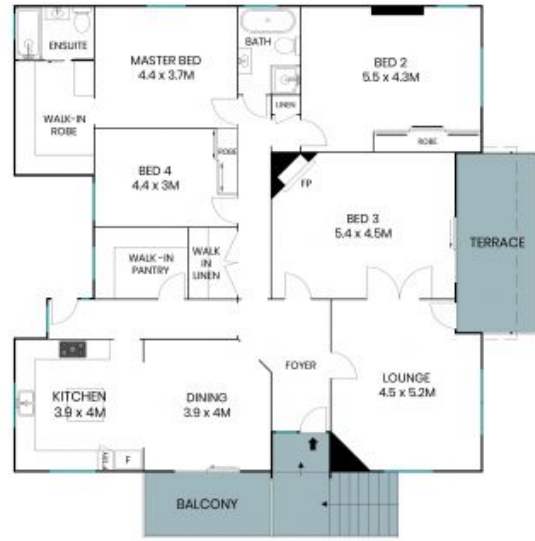
12 Riverview Street
Chiswick



Site Plan



Lower Level



Entry Level



The site plan and floor plan are not to scale; measurements are indicative and in metres. Bushes and trees are placed for illustration purposes. Plans should not be relied on. Interested parties should make and rely on their own enquiries. All other information provided has been collected from reliable sources but cannot be guaranteed for accuracy.