



215/11 Wentworth Street Manly, NSW



Resort-like living in the heart of Manly

Set within the highly renowned 'Peninsula' security building with an enormous heated Swimming Pool, Sauna and private Gymnasium on-site, this sleek and spacious contemporary apartment offers the ultimate Beachside and Harbourside retreat for executives, downsizers, investors or avid 'lock-and-leave' weekenders.

Price:

Contact Agent



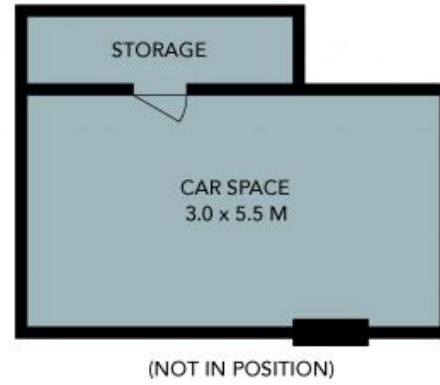
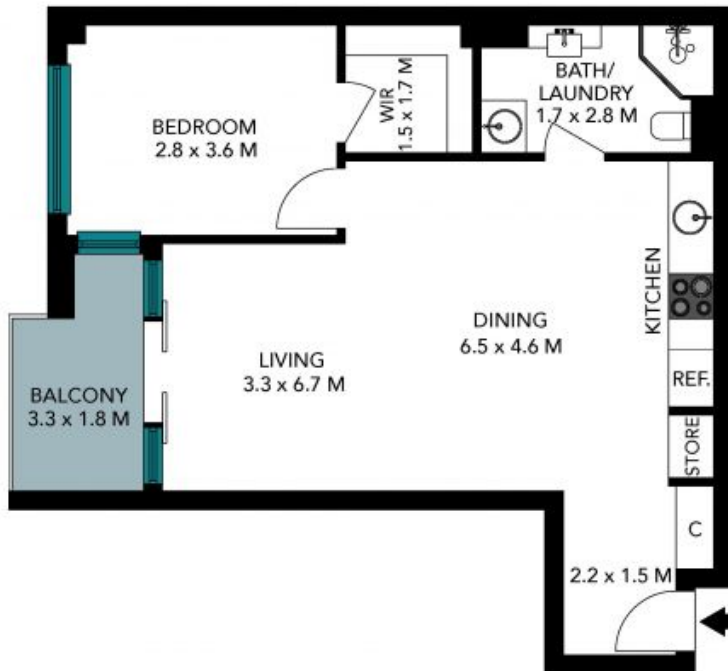
Candice Cattell

0417 311 777



Sam Bursill

0449 969 452



215/11 Wentworth Street
Manly



The floor plan is not to scale; measurements are indicative and in metres. All features included in this 3D plan are for inspiration purposes only. This is not an exact replica of the property or the position of exterior elements. Plans should not be relied on. Interested parties should make and rely on their own enquiries.