



1/189 Pacific Highway Lindfield, NSW 3 1 1

Freshly revitalized apartment wows with size and convenience

Presenting stellar convenience, with a level walk to everything you need, including 650m to Roseville rail, this newly refreshed and updated apartment offers an ideal live in or lease out opportunity. Set in a full brick security building in a garden level position that's easy for prams.

A focus on natural light and large proportions delivers 124sqm approx. on title with a desirable north aspect. Interiors showcase distinct living and bedroom zones displaying new oak-style flooring, plush new carpet, and fresh paint. Stroll to local eateries, cinema, and walk to Lindfield shops. One stop to Chatswood from Roseville station.

- Traditional full brick and concrete slab building, security intercom
- 124sqm approx. on title, fresh paint throughout interiors, high ceilings
- New oak-style floors to living areas and plush new carpet to bedrooms
- Open light-filled layout to living and dining with large windows on two sides

Price: Sold

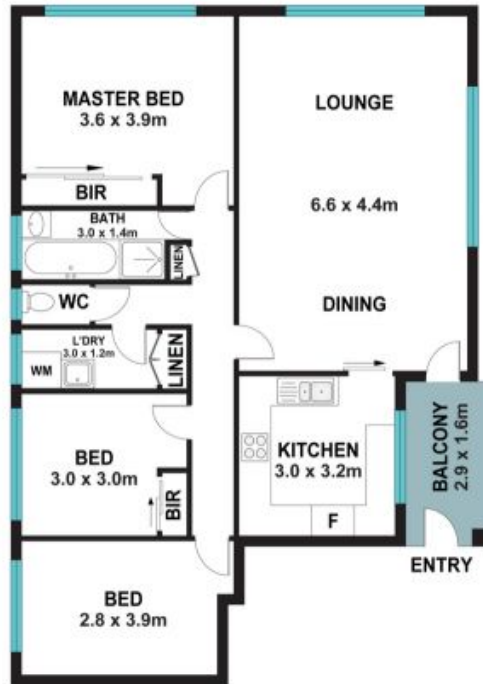


Ryan Woo
0410 884 680



Andrew Braid
0404 979 597

1/189 Pacific Highway,
Lindfield



Internal area: 99m²
Garage area: 25m²
Total area (approx): 124m²

The site plan and floor plan are not to scale; measurements are indicative and in metres. Bushes and trees are placed for illustration purposes. Plans should not be relied on. Interested parties should make and rely on their own enquiries. All other information provided has been collected from reliable sources but cannot be guaranteed for accuracy.