



6 O'Shea Circuit Cessnock, NSW

4 2 2

Federation brick home in prestigious Vineyard Grove

Standing head and shoulders above the competition with its spectacular presentation, bright atmosphere, and loads of living space, this property is Cessnock family living at its peak. Beyond its neat frontage the home opens to a welcoming and comfortable interior. Its key highlights are multiple expansive living areas, all naturally bright and made pleasant through ceiling fans, air conditioning and providing an abundance of space to relax or connect with family. With a list of new features including solar panels overhead to help cut down on bills, this home is sure to impress!

- Three great sized bedrooms with built-in robes, master with ensuite, walk-in robe and A/C
- Formal and informal living / dining room, each with A/C
- Modern kitchen with gas cooking, electric oven, dishwasher, walk-in pantry
- Sparkling inground pool with top of the range electric heating
- Within 1km to Mount View High School, local vineyards, and 5kms to Cessnock town centre
- Double garage with interior access; large storage shed in yard

Price: \$900,000



Matthew Clarkson

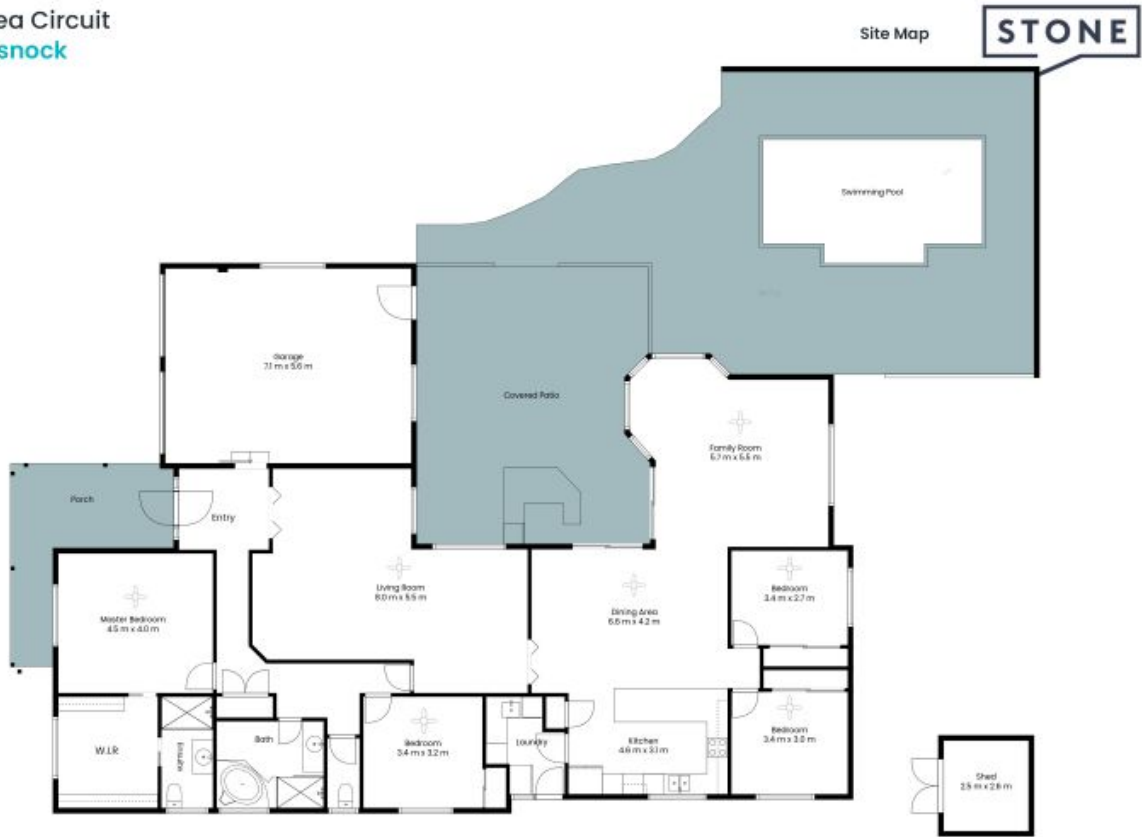
0456 791 524



Donney Ristevski

0415 597 002

6 O'Shea Circuit
Cessnock



The site plan and floor plan are not to scale; measurements are indicative and in metres. Bushes and trees are placed for illustration purposes. Plans should not be relied on, interested parties should make and rely on their own enquiries. All other information provided has been collected from reliable sources but cannot be guaranteed for accuracy.



6 O'Shea Circuit
Cessnock



The site plan and floor plan are not to scale; measurements are indicative and in metres. Bushes and trees are placed for illustration purposes. Plans should not be relied on. Interested parties should make and rely on their own enquiries. All other information provided has been collected from reliable sources but cannot be guaranteed for accuracy.