



7 Teasdale Close Elderslie, NSW

4

2

2

Modern living hamptons style

If you're looking for a great size home that offers modern features with a Hamptons feel then you will love this stunning home perfectly positioned in a quiet cul-de-sac in the highly sort after Elderslie.

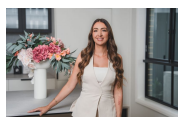
The moment you walk through the front door your eyes are immediately drawn to the striking features that have been carefully curated through the entire floor-plan. Every care and detail has been taken when finishing this immaculately presented home perfect for you and your family.

Price: \$1,310,000



Anthony Grima

0421 228 414



Rebecca Philp

0403 613 271



The floor plan is not to scale; measurements are indicative and in metres. Door or elements are not in position. Plans should not be relied on. Interested parties should make and rely on their own enquiries. All other information provided has been collected from reliable sources but cannot be guaranteed for accuracy.

7 Teasdale Close, Elderslie

