

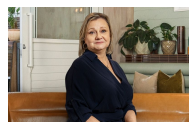
12 St Lawrence Street Greenwich, NSW 4 [bed icon] 2 [bath icon] 2 [car icon]

An Incredibly Rare and Unique Estate

This meticulously presented circa 1900's classic Federation home is set on a staggering 1,400m2 parcel of land. Exceptionally well positioned, only footsteps to Greenwich Ferry and a stroll to Greenwich Village and Primary School.

- Substantial double brick home boasts:-
- Formal Living and Dining Rooms with Ornamental fireplaces
- North Sydney Skyline & District views
- Ornate 3m ceilings, stained glass features, original timber-work, gracious timber staircase and more
- Dark stained timber floors throughout
- Stylish kitchen with stone bench tops, gas cooking and dishwasher
- Sunroom opens to the level sandstone terrace
- 4 spacious bedrooms all with robes
- Media Room or 5th bedroom

Price: LEASED \$2,450
Bond: \$9,800
Available Date: 25/01/2024



Diane Shipley
0413 137 874



Jaydn Frintzilas
0468 998 294