



40 Croudace Street Edgeworth, NSW

3 1 1

Three Bedroom Home Centrally located!

This lovely three bedroom home is full of surprises and charm, from the welcoming front verandah, to the back enclosed yard and outdoor alfresco area on the back deck. Under 5 minutes to Glendale super centre, local schools and under 10 minutes to the M1. You must inspect!

Price: \$550 per week

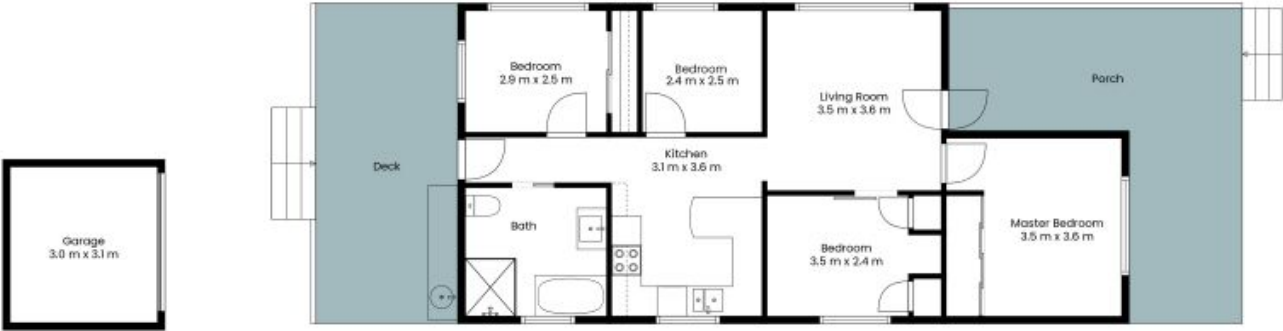
Available Date: 05/01/2024



Chelsey Girvan

02 4089 1111

40 Croudace Street
Edgeworth



The site plan and floor plan are not to scale; measurements are indicative and in metres. Bushes and trees are placed for illustration purposes. Plans should not be relied on, interested parties should make and rely on their own enquiries. All other information provided has been collected from reliable sources but cannot be guaranteed for accuracy.

