



317/21-37 Waitara Avenue Waitara, NSW

2  2  1 

Sold by Geraldine Wang 0452 562 183

Sold by Geraldine Wang 0452 562 183

Near new apartment, arguably the best quality built in the area. The "Park Rise" is one of the latest developments designed by multi-award winning architects Bates Smart, developed and built by Australian owned companies, offers high standard finishes and contemporary lifestyle, it's surely one of the most sought after complexes in the Waitara area since its completion.

Price: Sold by Geraldine Wang 0452 562 183
Council Rates: \$309.50 p/q



Geraldine (Xiao-Bin) Wang
 0452 562 183



Adam Noakes
 0450 753 268

317/21-37 Waitara Avenue
Waitara

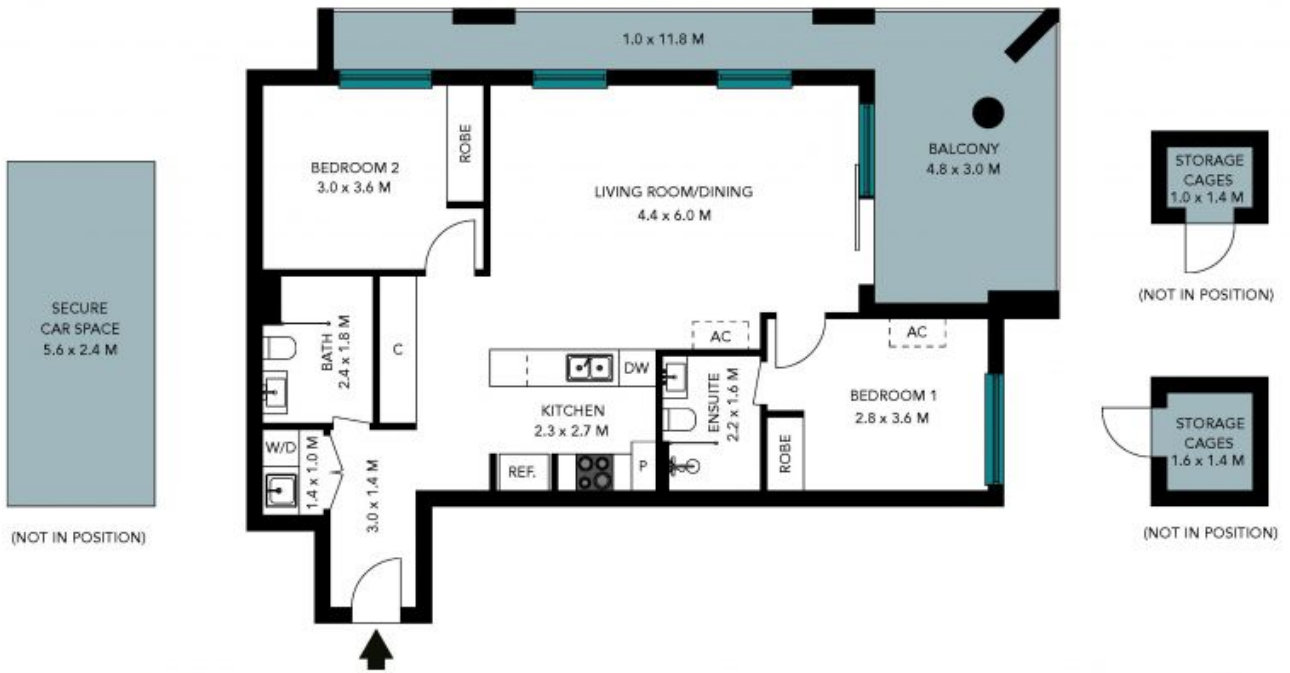
STONE



Internal Living: 72 sqm
External Living: 22 sqm
Total Living Area: 94 sqm



The floor plan is not to scale; measurements are indicative and in metres. All features included in this 3D plan are for inspiration purposes only. This is not an exact replica of the property or the position of exterior elements. Plans should not be relied on. Interested parties should make and rely on their own enquiries.



Internal Living: 72 sqm
External Living: 22 sqm
Total Living Area: 94 sqm



The floor plan is not to scale; measurements are indicative and in metres. Exterior elements are not in position. Plans should not be relied on; interested parties should make and rely on their own enquiries. All other information provided has been collected from reliable sources but cannot be guaranteed for accuracy.