



13/5 Robilliard Street Mays Hill, NSW



### Serenity and Style

Elegance and sophistication define this 2-bedroom apartment, well-located on the 2nd level of the complex. A spacious open-plan living room sets the stage for refined living, adorned by an ultra-modern kitchen with island bench. Perfectly located near Parramatta CBD, you will find yourself within walking distance to Westfield shopping, Parramatta Park and local schools, with easy access to multiple transport options and the M4 Motorway.

Price:

UNDER CONTRACT

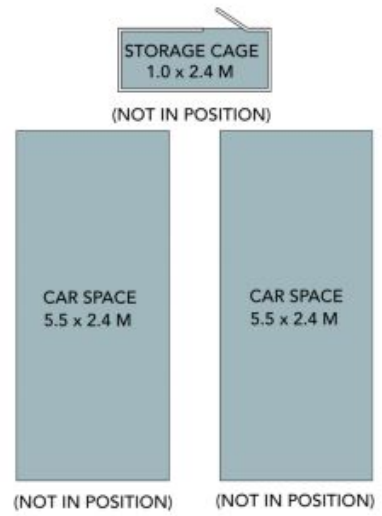
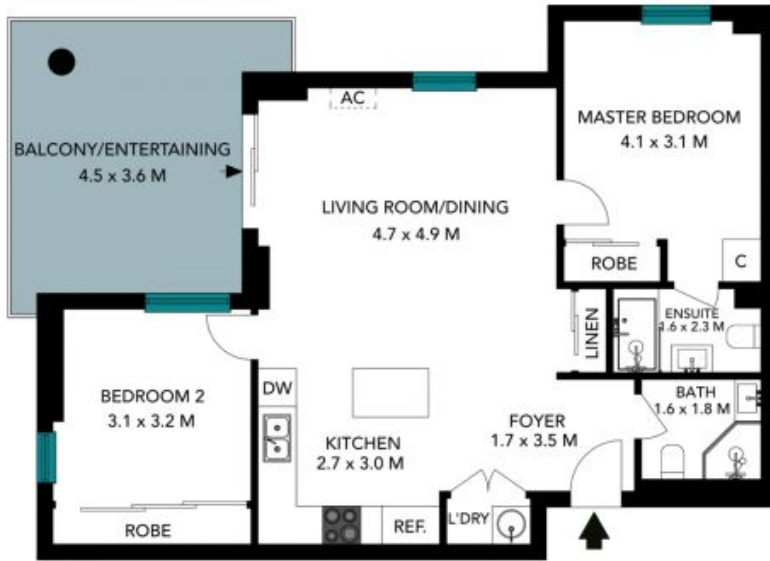


**Joseph Maatouk**

0416 589 096

13/5 Robilliard Street  
Mays Hill

STONE



The floor plan is not to scale, measurements are indicative and in metres. Exterior elements are not in position. Plans should not be relied on, interested parties should make and rely on their own enquiries. All other information provided has been collected from reliable sources but cannot be guaranteed for accuracy.

13/5 Robilliard Street  
Mays Hill



The floor plan is not to scale; measurements are indicative and in metres. All features included in this 3D plan are for inspiration purposes only. This is not an exact replica of the property or the position of exterior elements. Plans should not be relied on. Interested parties should make and rely on their own enquiries.