



9 Pimlico Lane Aspley, QLD

5 

2 

2 

### Family Friendly

VACANT and ready to inspect this impeccably presented 2000's built two story brick abode showcases modern living taking full advantage of the Queensland climate. Offering a light and contemporary colour scheme which adds to the expansive nature of the home teamed up with a family friendly floorplan and positioned just moments from bike paths, parks & shops, perfect for the active lifestyle.

- Low maintenance 324sqm block
- 2 x Water tanks with pumps
- 2 x Small garden sheds
- Split system air-conditioning
- Conery electric hot water system
- Tined windows
- Security screens
- Lush established gardens

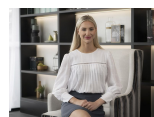
Price:

Offers over \$1,050,000



**Tristan Rowland**

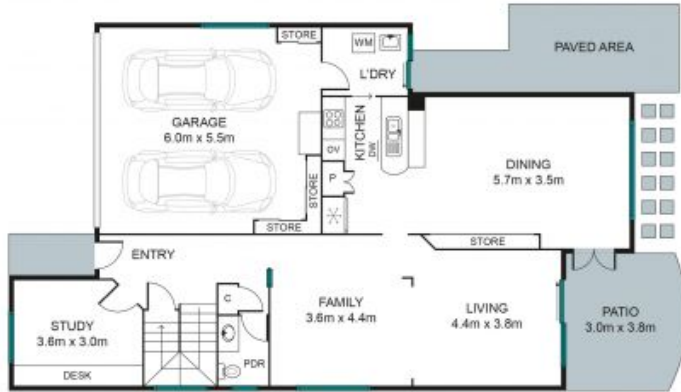
0411 572 970



**Kate Veal**

0455 333 306

**INTERNAL** 216 SQM  
**EXTERNAL** 20 SQM  
**TOTAL** 236 SQM



**LEVEL 1**



**LEVEL 2**

The site plan and floor plan are not to scale, measurements are indicative and in metres. Bushes and trees are placed for illustration purposes. Plans should not be relied on, interested parties should make and rely on their own enquiries.

9 Pimlico Lane, Aspley

Stoneaspley.com.au

