



59 Lisa Crescent Coomera, QLD



## Start in Style: Discover Your Dream Home in a Desirable, Central Locale...

Nestled in a peaceful locale just steps away from local shops and restaurants, this beautiful home promises the ultimate in comfortable living and entertaining. It boasts an oversized separate living area, both tastefully decorated and filled with natural light. The heart of the home is a gourmet kitchen, complete with spacious countertops and sleek stainless-steel appliances, creating the perfect centrepiece for gatherings. This home, perfectly sized and ideally located near shops, restaurants, and the Westfield Town Centre, presents an unmissable opportunity!

Notable features include:

- 4 bedrooms
- 2 bathrooms
- 450m<sup>2</sup> land size
- Double lockup garage with 2 car spaces
- Master bedroom with walk-in robe and ensuite
- 2 inviting living areas.
- Outdoor dining space

Price:

Offers over \$799,000



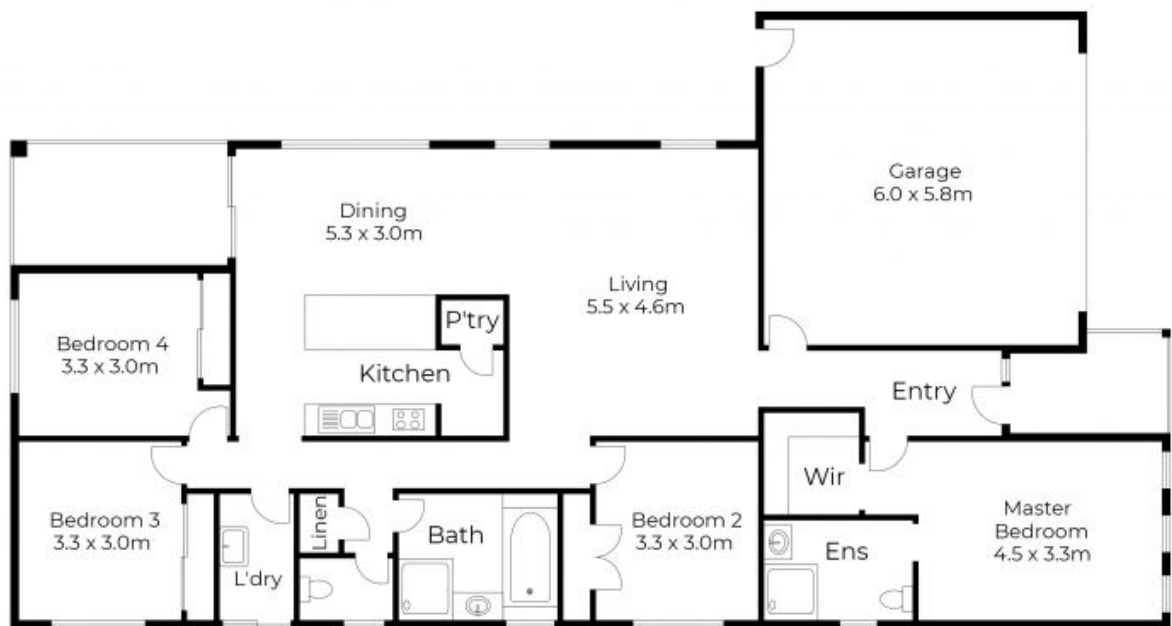
**Andrew Colley**

0488 217 803



**Andrew Colley**

0488 217 803



Floor plans and site plans are for illustrative purposes only. They are not part of any legal document or title and are subject to errors, omission, and inaccuracies. Whilst every attempt has been made to ensure the accuracy of this plan, measurements of doors, windows, rooms, cupboards etc are approximate only.

APPROXIMATE AREA  
 LIVING AREA : 142 m<sup>2</sup>  
 TOTAL AREA : 176 m<sup>2</sup>





Floor plans and site plans are for illustrative purposes only. They are not part of any legal document or title and are subject to errors, omission, and inaccuracies. Whilst every attempt has been made to ensure the accuracy of this plan, measurements of doors, windows, rooms, cupboards etc are approximate only.

APPROXIMATE AREA  
 LIVING AREA : 142 m<sup>2</sup>  
 TOTAL AREA : 176 m<sup>2</sup>