



59 Lisa Crescent Coomera, QLD



Start in Style: Discover Your Dream Home in a Desirable, Central Locale...

Nestled in a peaceful locale just steps away from local shops and restaurants, this beautiful home promises the ultimate in comfortable living and entertaining. It boasts an oversized separate living area, both tastefully decorated and filled with natural light. The heart of the home is a gourmet kitchen, complete with spacious countertops and sleek stainless-steel appliances, creating the perfect centrepiece for gatherings. This home, perfectly sized and ideally located near shops, restaurants, and the Westfield Town Centre, presents an unmissable opportunity!

Notable features include:

- 4 bedrooms
- 2 bathrooms
- 450m2 land size
- Double lockup garage with 2 car spaces
- Master bedroom with walk-in robe and ensuite
- 2 inviting living areas.
- Outdoor dining space

Price:

Offers over \$799,000



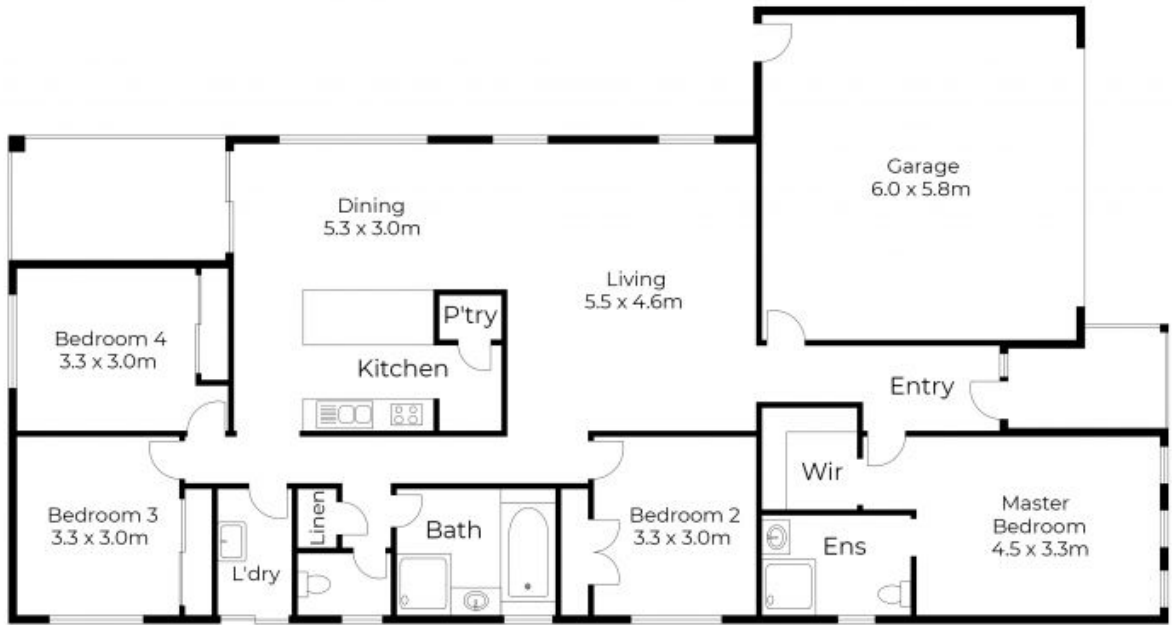
Andrew Colley

0488 217 803



Andrew Colley

0488 217 803



Floor plans and site plans are for illustrative purposes only. They are not part of any legal document or title and are subject to errors, omission, and inaccuracies. Whilst every attempt has been made to ensure the accuracy of this plan, measurements of doors, windows, rooms, cupboards etc are approximate only.

APPROXIMATE AREA
 LIVING AREA : 142 m²
 TOTAL AREA : 174 m²



STONE

Floor plans and site plans are for illustrative purposes only. They are not part of any legal document or title and are subject to errors, omission, and inaccuracies. Whilst every attempt has been made to ensure the accuracy of this plan, measurements of doors, windows, rooms, cupboards etc are approximate only.

APPROXIMATE AREA
LIVING AREA : 142 m²
TOTAL AREA : 174 m²