



380/1 Anthony Rolfe Avenue Gungahlin, ACT

2

2

1

Resort living in an ideal location!

This residence boasts an ideal location for embracing cosmopolitan living while providing a resort-style experience with meticulously landscaped gardens, two well-kept BBQ areas, a gym, pool, and jacuzzi for a maintenance-free lifestyle. It presents a chic apartment with a spacious open-plan living area and a sizable balcony for enjoying splendid views. The kitchen, equipped with quality stone benchtops and appliances including a dishwasher and electric cooktop, also offers ample storage with a generous pantry cupboard.

Features Overview:

- Single level apartment on the 18th floor
- Age: 2 years (built in 2020)
- Units plan number: 4421
- EER (Energy Efficiency Rating): 6 Stars

Development Information:

- Name of development: Infinity towers
- Number of units in development: 433

Price:

\$449,000+



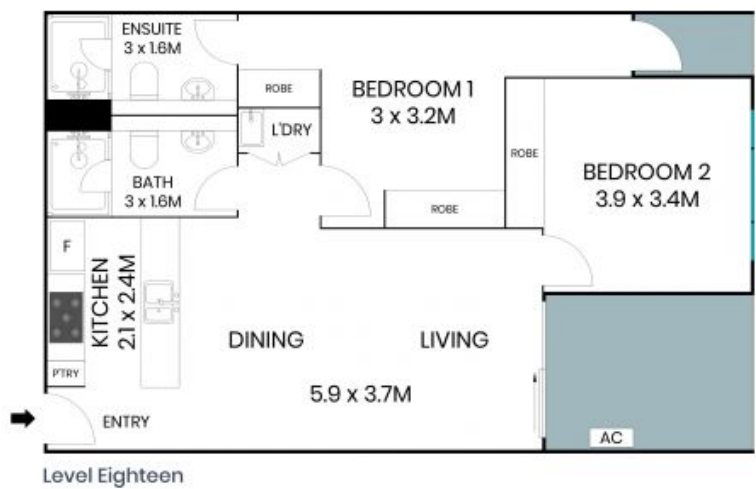
Jess Smith

0410 125 475



Shaye Davies

0459 140 665



The site plan and floor plan are not to scale; measurements are indicative and in metres. Bushes and trees are placed for illustration purposes. Plans should not be relied on. Interested parties should make and rely on their own enquiries. All other information provided has been collected from reliable sources but cannot be guaranteed for accuracy.

380/1 Anthony Rolfe Avenue
Gungahlin



Level Eighteen



The floor plan is not to scale; measurements are indicative and in metres. All features included in this 3D plan are for inspiration purposes only. This is not an exact replica of the property or the position of exterior elements. Plans should not be relied on. Interested parties should make and rely on their own enquiries.